

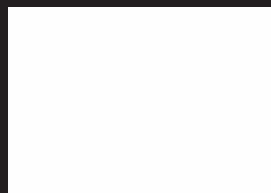
## HAELVOET A COLLECTION

---

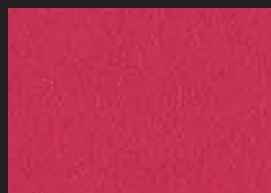
- Stamskin Top (M2)
- Silverguard (M2)
- Vescom Furka Plus (Crib5)
- Vescom Leone Plus (Crib5)
- Vescom Creek (Crib5)
- Vescom Arrow (Crib5)
- Vescom Dalma (Crib5)
- Vescom Jemo (Crib5)
- Boltaflex (M1)
- Diamonds (M2)
- Skai Parotega (M1)
- Skai Palma (M1)
- Purfect (Crib5)
- Ginkgo (M1)
- Valencia (M2)
- Harlow (M2)
- Maglia (M2)
- Hitch (M2)
  
- Agua Linetta (Crib5)
- Agua Tones (Crib5)
- Agua Nova (Crib5)



F4340-10120



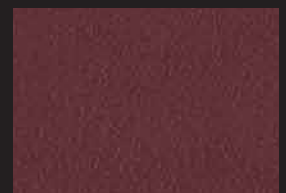
F4340-5029



F4340-20287



F4340-07479



F4340-20283



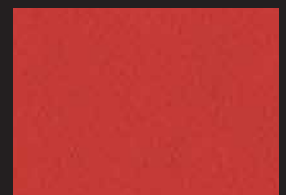
F4340-20299



F4340-20281



F4340-20280



F4340-07478



F4340-10295



F4340-20294



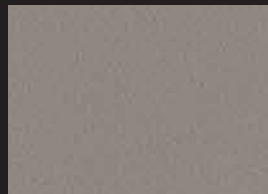
F4340-20289



F4340-20288



F4340-20300



F4340-20237



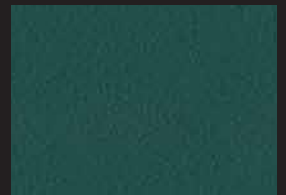
F4340-20284



F4340-20253



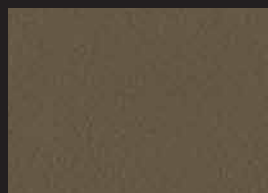
F4340-20241



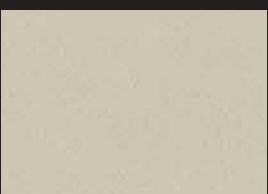
F4340-20282



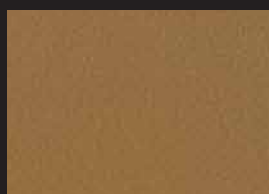
F4340-20296



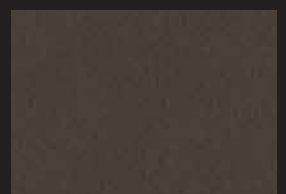
F4340-20285



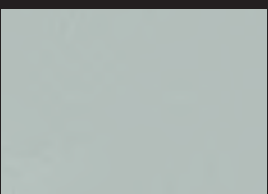
F4340-20279



F4340-20286



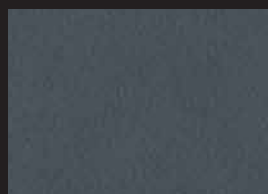
F4340-20129



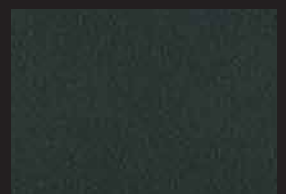
F4340-20161



F4340-07432



F4340-07445



F4340-00002

# Stamskin

## Top

### ■ Technical properties - Propiedades técnicas

### Standards - Normas

Description - Descripción	Multi-layer composite - Composite multi capas	
Base cloth - Soporte	Polyamide-jersey - Poliamida-jersey	
Width - Ancho	Approx. 140 cm - 55.1 inches	
Weight - Peso	780 g/m <sup>2</sup> - 23 oz/yd <sup>2</sup>	EN ISO 2286-2
Thickness - Espesor	1.0 - 1.2 mm • 1000-1200 μ	ISO 5084

### ■ Physical properties - Propiedades físicas

Elongation under load 125 N/5 cm Alargamiento bajo carga 125 N/5 cm	> 35% / > 55% (warp/weft) - (urdimbre/trama)	EN ISO 1421
Tensile strength Resistencia a la tracción	> 440 N / 5 cm / > 280 N / 5 cm (warp/weft) - (urdimbre/trama)	EN ISO 1421
Tear strength Resistencia al desgarro	> 25 N / > 15 N > 120 000 cycles (warp/weft) - (urdimbre/trama)	EN ISO 13937/1
Abrasion resistance (norms, cycles) Resistencia a la abrasión (normas, ciclos)	> 120 000	EN ISO 5470-2 Martindale
Flexing resistance (no damage, cycles) Resistencia a los pliegues (ciclos sin daños)	400 000	EN ISO 7854
Light stability Estabilidad a la luz	GS=4 at 700h - GS=4 a 700h	ASTMG154: UVA340
Mold resistance - Resistencia al moho	Degree 0, excellent - Grado 0, excelente	EN ISO 846-A
Extreme working temperatures Temperaturas extremas de uso	-20°C / +70°C - -4°F / 158°F	

### ■ Flame retardancy - Reacción al fuego

Switzerland - Suiza	5.3	SN 198898 - VKF/AEAI
Italy - Italia	Class 2 - Clase 2	UNI 9177/87
Germany - Alemania	Class K1	DIN 53438 / T2
France - Francia	M2 F4	NFP 92.507 NFP 16-101-102
United States - Estados Unidos	Pass - Conforme Class 1	CAL TB 117-2013 NFPA 260
Australia - Australia	Pass - Conforme Group 2	AS / NZS 1530-3 AS/NZS 3837
Test cigarette / match - Test cigarrillo / cerilla	No fire - Sin ignición	EN 1021.1 - 1021.2
Marine test - Test marino	Pass - Conforme	IMO MSC.307 (88) (2010 FTP Code) Annex 1 part 8
Aeronautical test - Test aeronáutico	Pass - Conforme	FAR/JAR 25-853/855

### ■ Management systems - Sistemas de gestión

Quality - Calidad	ISO 9001
Environment - Medio ambiente	ISO 14001

### ■ Certifications, labels, garantíes - Certificaciones, labels, garantías



**5 years  
guarantee**

**Phthalate  
free**

**Swiss  
made**

**Smart Coating  
Technology**



With **S+** Serge Ferrari goes further than the Standards.  
(consult us for further information)

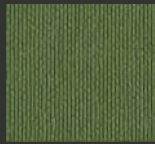
Quoted technical characteristics are average values with a +/- 5% tolerance. Our products are subject to improvements resulting from technical developments and we reserve the right to modify their characteristics at any time. The purchaser of our products is responsible for checking the above data.

Las características técnicas indicadas son valores medios con una tolerancia de +/- 5%. Nuestros productos están sujetos a evolución según los progresos técnicos, reservándonos el derecho de modificar las características en todo momento. Es responsabilidad del comprador de nuestros productos comprobar la validez de los datos anteriores.



# SILVERGUARD

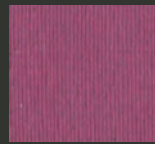
Indoor - Outdoor



SG95020  
BASIL



SG95009  
SAGE



SG92097  
ORCHID



SG92099  
LOTUS



SG94004  
ICE



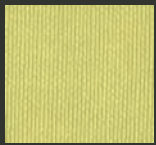
SG92089  
WHITE



SG95008  
PISTACHO



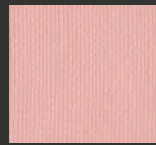
SG95019  
CELERY



SG92092  
AVOCADO



SG97002  
MAGENTA



SG92098  
ROSE



SG92090  
ICECREAM



SG91077  
CREAM



SG95063  
FOREST



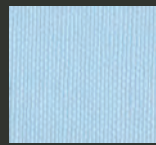
SG95010  
BOTTLE



SG92104  
ULTRAVIOLET



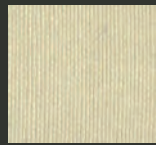
SG97001  
AUBERGINE



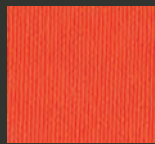
SG92103  
SKYLIGHT



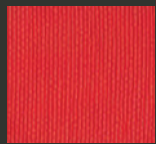
SG90001  
MACADAMIA



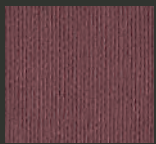
SG91051  
SISAL



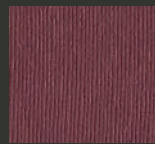
SG92096  
TOMATO



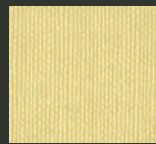
SG92095  
GRENADINE



SG96004  
RUBIN



SG92016  
RASPBERRY



SG92091  
CITRUS



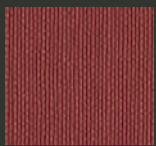
SG90002  
SANDSTONE



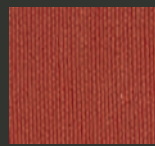
SG91078  
CHAMPAGNE



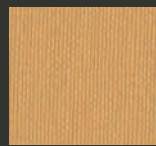
SG92011  
RED



SG92064  
WINE



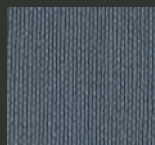
SG92012  
SUNKIST



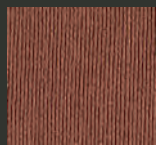
SG92105  
CAMEL



SG91010  
BEIGE



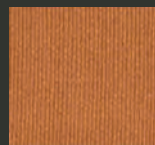
SG94002  
STORM



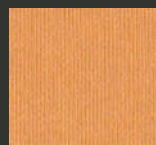
SG91014  
UMBER



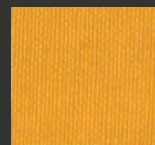
SG96061  
MANDARIN



SG90013  
ORANGE



SG96062  
MELON



SG96065  
SAFRAN



SG92101  
ALUMINIUM



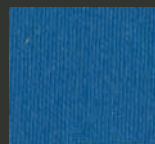
SG99002  
CARBON



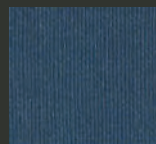
SG92003  
COBRE



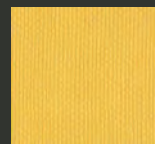
SG90009  
TAUPE



SG93067  
DELFT



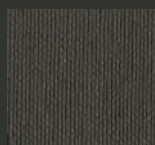
SG93007  
SAPPHIRE



SG92093  
SQUASH



SG94001  
PLATA



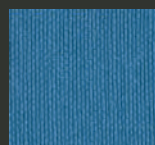
SG90005  
MOCCA



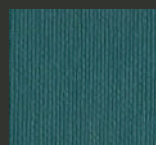
SG90073  
LUGGAGE



SG94012  
SHIITAKE



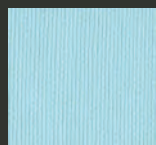
SG93066  
BALTIC



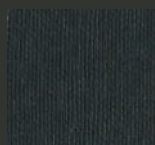
SG92100  
TEAL



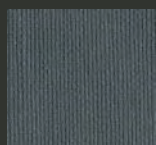
SG92094  
PETROL



SG92102  
CORAL



SG99001  
BLACK



SG94003  
GRAPHITE



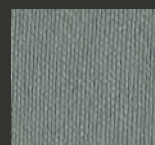
SG94024  
METEOR



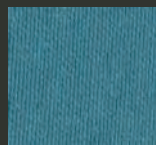
SG93068  
JET



SG94010  
TITANIUM



SG94011  
STERLING

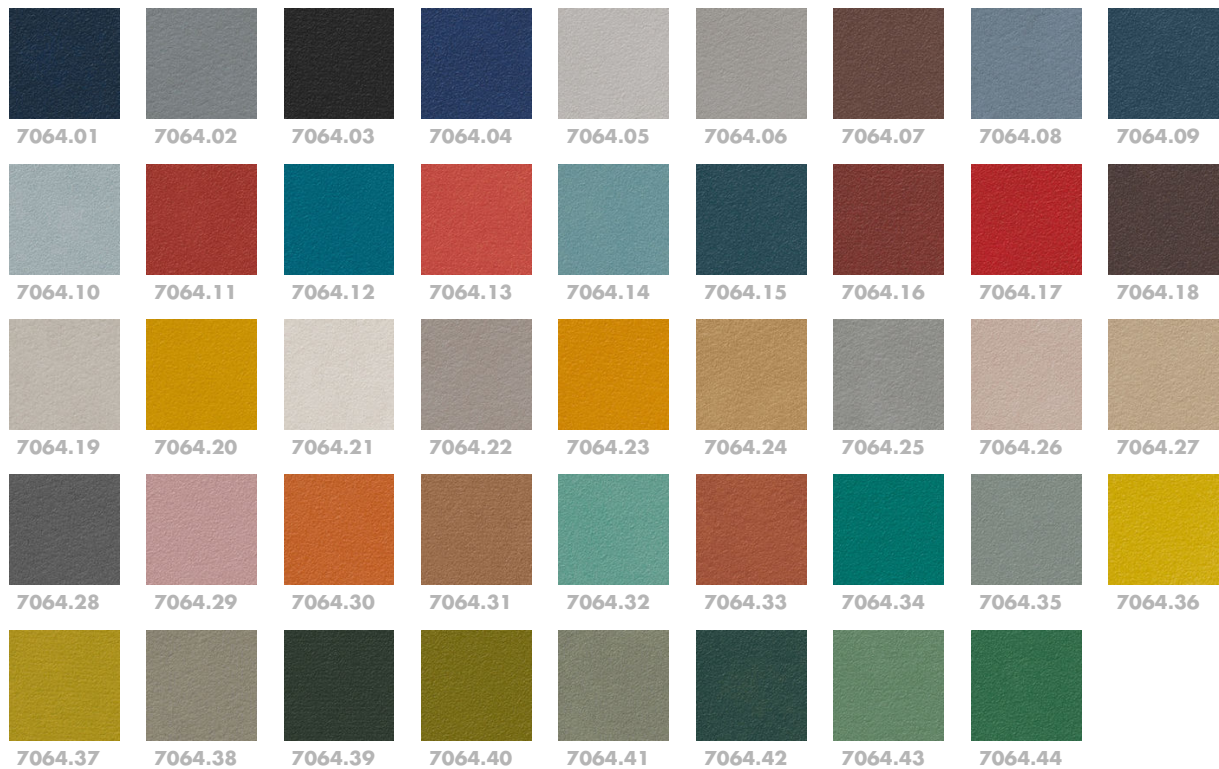


SG93001  
TURQUOISE

# furka plus

7064.01 - 7064.44

---



# leone plus

7054.01 - 7054.26

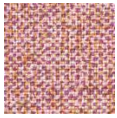
---



# creek

7053.01 - 7053.22

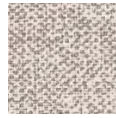
---



7053.01



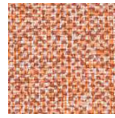
7053.02



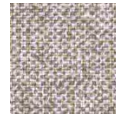
7053.03



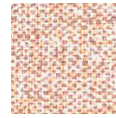
7053.04



7053.05



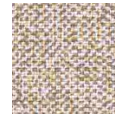
7053.06



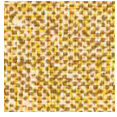
7053.07



7053.08



7053.09



7053.10



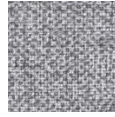
7053.11



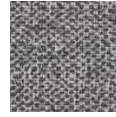
7053.12



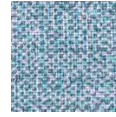
7053.13



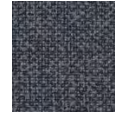
7053.14



7053.15



7053.16



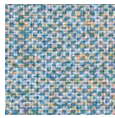
7053.17



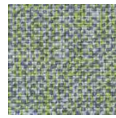
7053.18



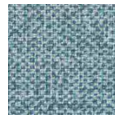
7053.19



7053.20



7053.21



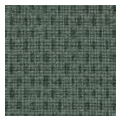
7053.22



# arrow

7055.01 - 7055.23

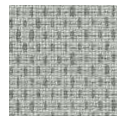
---



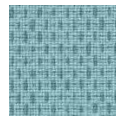
7055.01



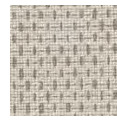
7055.02



7055.03



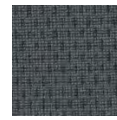
7055.04



7055.05



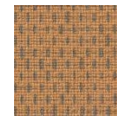
7055.06



7055.07



7055.08



7055.09



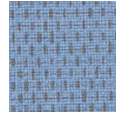
7055.10



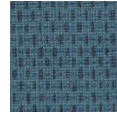
7055.11



7055.12



7055.13



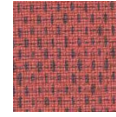
7055.14



7055.15



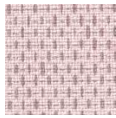
7055.16



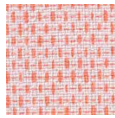
7055.17



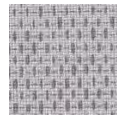
7055.18



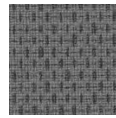
7055.19



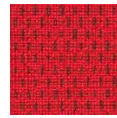
7055.20



7055.21



7055.22



7055.23

# dalma

7024.01 - 7024.22

---



7024.01



7024.02



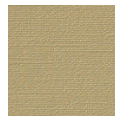
7024.03



7024.04



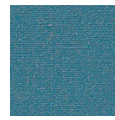
7024.05



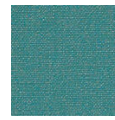
7024.06



7024.07



7024.08



7024.09



7024.10



7024.11



7024.12



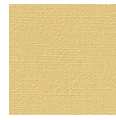
7024.13



7024.14



7024.15



7024.16



7024.17



7024.18



7024.19



7024.20



7024.21



7024.22

# jemo

7044.01 - 7044.21

---



7044.01



7044.02



7044.03



7044.04



7044.05



7044.06



7044.07



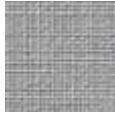
7044.08



7044.09



7044.10



7044.11



7044.12



7044.13



7044.14



7044.15



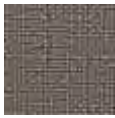
7044.16



7044.17



7044.18



7044.19



7044.20



7044.21

# BOLTAFLEX COLOURWAYS

Indoor



TOMATO  
454 285



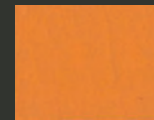
PERSIMMON  
454 303



NASTURTIUM  
454 293



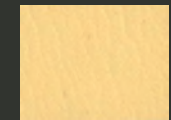
MARIGOLD  
454 301



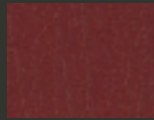
SAFFRON SILK  
454 294



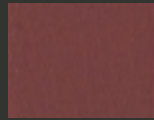
LEMON PEEL  
454 308



WHEAT  
454 327



NEW BURGUNDY  
454 287



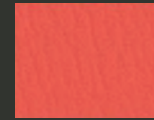
WINE  
454 307



CANDY APPLE  
454 298



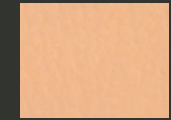
FIRE RED  
454 311



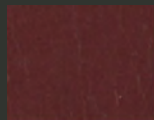
LOX  
454 348



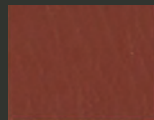
INDIAN RED  
454 289



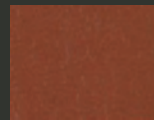
MELBA  
454 365



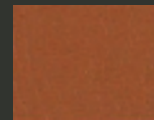
PORT  
454 351



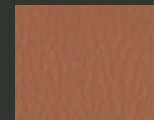
DEEP CLAY  
454 288



RUSSET  
454 297



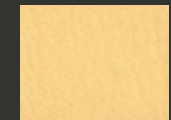
BURNT ORANGE  
454 299



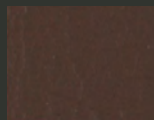
BRANDY  
454 336



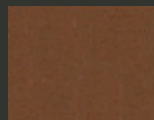
APRICOT  
454 345



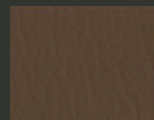
MELON  
454 361



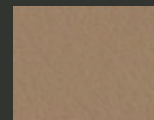
CHOCOLATE  
454 318



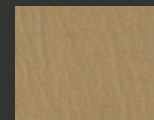
ALLSPICE  
454 304



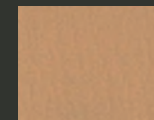
OAK BROWN  
454 363



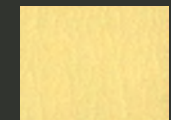
SADDLE TAN  
454 309



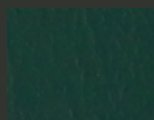
CAMEL  
454 305



RUM SHERBET  
454 354



CEYLON IVORY  
454 334



HUNTER GREEN  
454 296



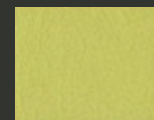
EMERALD  
454 352



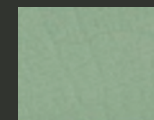
EMPIRE GREEN  
454 314



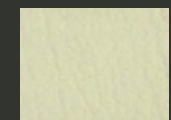
LIME  
454 326



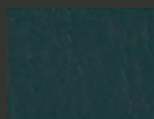
CITRUS  
454 122



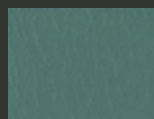
OCEAN GREY  
454 332



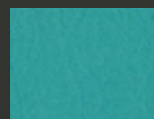
MOONGLOW  
454 310



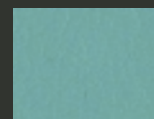
SPRUCE  
454 325



JADE  
454 317



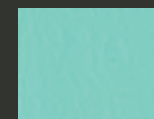
TURK  
454 295



LIGHT TEAL  
454 300



CHINA GREEN  
454 319



QUARTZ  
454 330



MINT JULEP  
454 313



BLUEJAY  
454 284



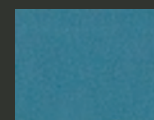
MARINA  
454 283



BRIGHT BLUE  
454 121



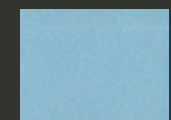
PHOENICIAN  
454 350



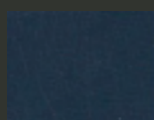
SKY  
454 347



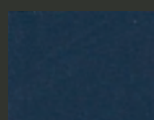
LIGHT BLUE  
454 123



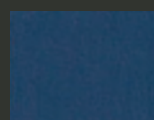
CERULEAN  
454 349



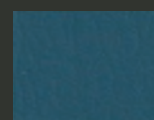
NAVY  
454 312



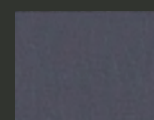
ROYAL BLUE  
454 292



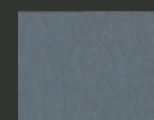
BLUEBERRY  
454 286



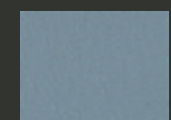
COLONIAL BLUE  
454 346



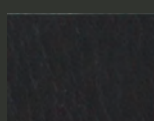
COAL  
454 328



CADET  
454 353



FJORD  
454 344



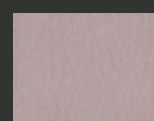
ESPRESSO  
454 333



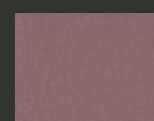
GRAPE  
454 302



PURPLE IRIS  
454 291



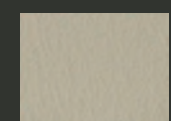
LILAC  
454 368



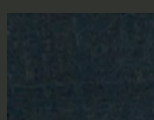
MAUVE  
454 367



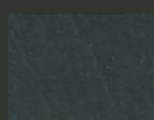
ROSEWOOD  
454 908



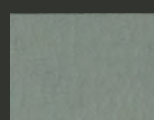
NATURAL  
454 329



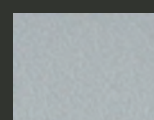
BLACK  
454 290



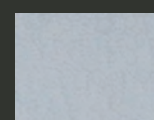
SLATE  
454 316



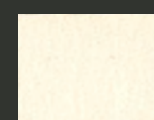
GREY  
454 358



LIGHT GREY  
454 331



GLACIER  
454 366



WHITE  
454 306

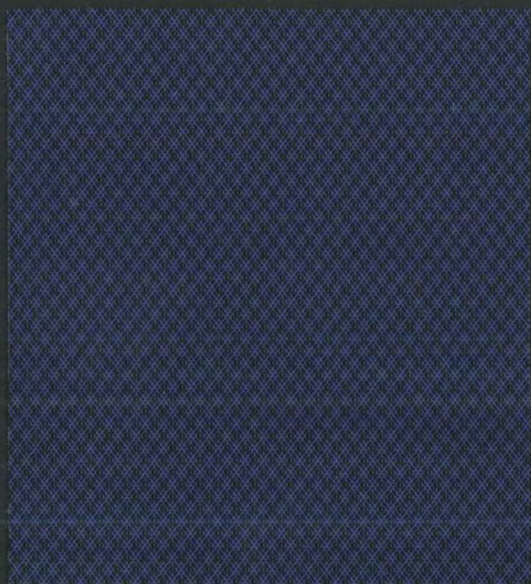


SNOW WHITE  
454 315

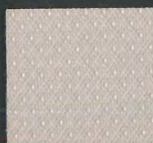


DIAMONDS

Indoor - Outdoor



6618 DIAMONDS INDIGO



6620  
TAPIOCA



6606  
TAUPE



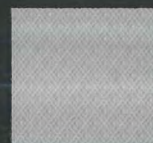
6617  
GRAPEY



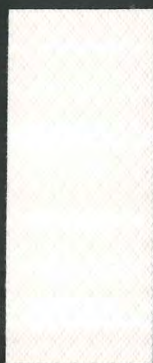
6614  
MULBERRY



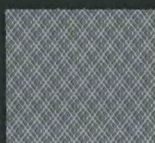
6623  
VINTAGE



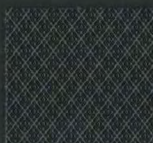
6621  
TONIC



6600  
POLAR



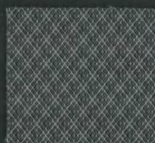
6622  
MERCURY



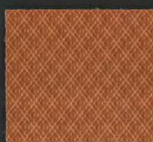
6610  
CARBON



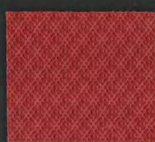
6608  
REGATTA



6603  
METEOR



6602  
SUNSET



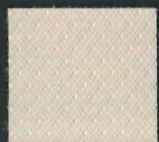
6607  
LAVA



6615  
SNOW



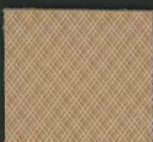
6613  
EXPRESSO



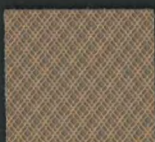
6616  
IVORY



6601  
SAGE



6604  
HONEY



6619  
OTONO



6624  
PEPPER



6611 DIAMONDS OLIVE



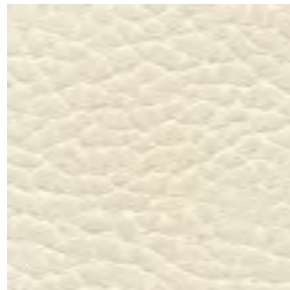
# skai® Parotega NF



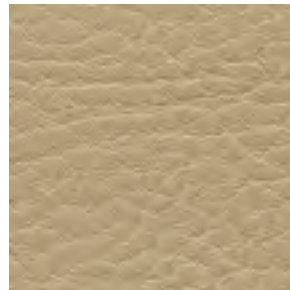
0098-18  
IMO FTPC Part 8



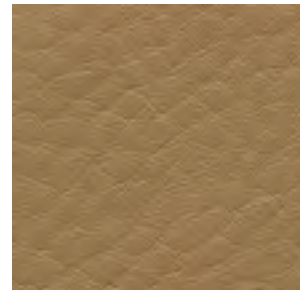
weiss F6461652



hellbeige F6461632



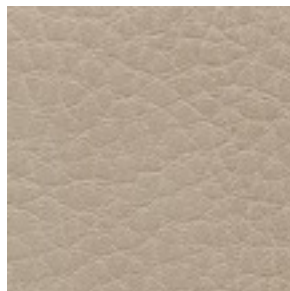
kiesel F6461653



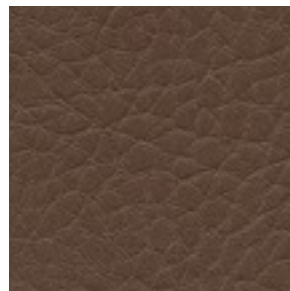
sattel F6461733



perle F6461662

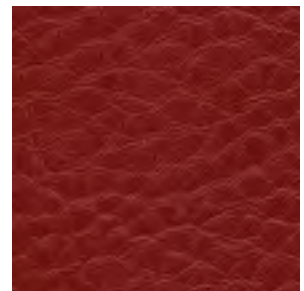


birke F6461661

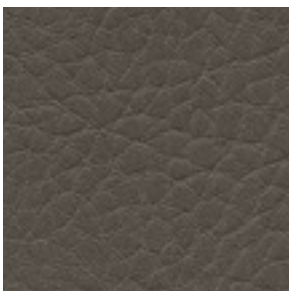


cappuccino F6461762

New

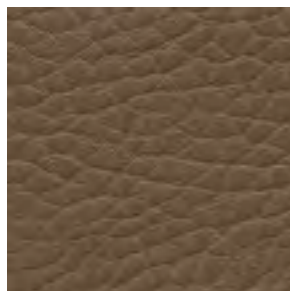


marone F6461655

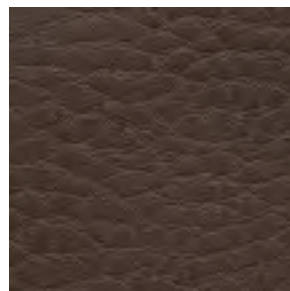


cinder F6461763

New



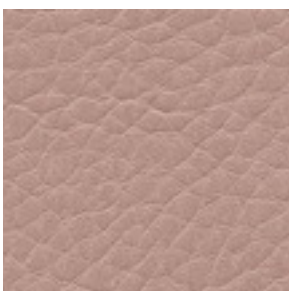
smoke F6461660



olivbraun F6461704

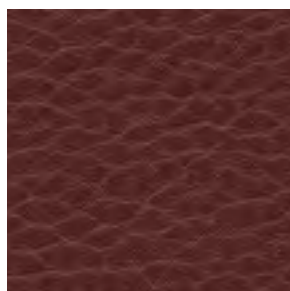


schoko F6461656



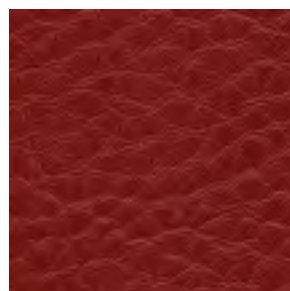
light rosé F6461764

New

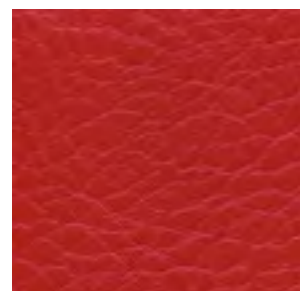


marsala F6461765

New



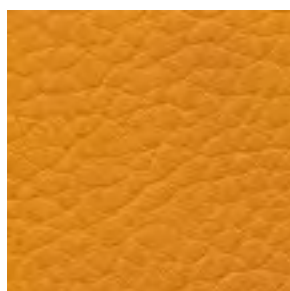
kirsche F6461665 \*



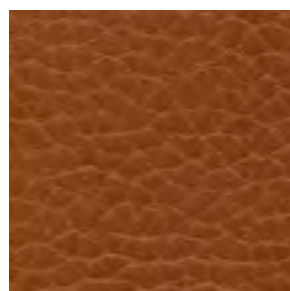
feuer F6461707



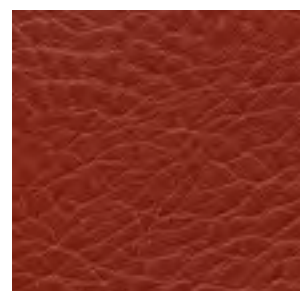
cashmere F6461737



mango F6461666

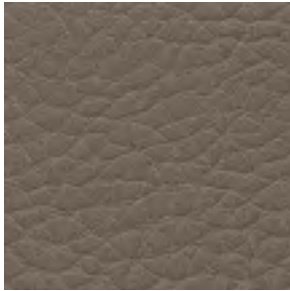


sherry F6461654



lachs F6461702

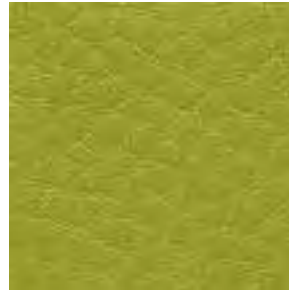
# skai® Parotega NF



fango F6461658



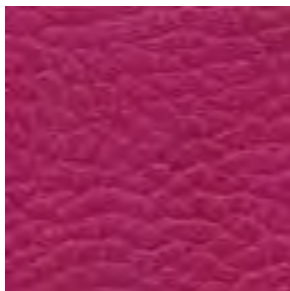
mais F6461706



limone F6461657



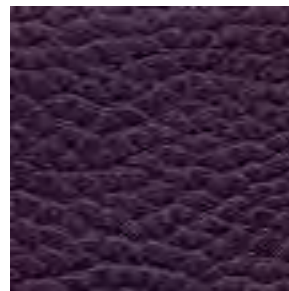
olivgrün F6461705



fuchsia F6461735



lila F6461736



amethyst F6461664



teal F6461766

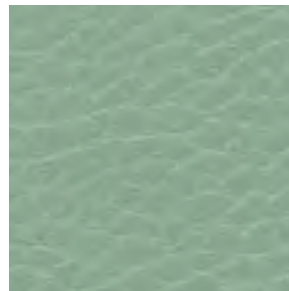
New



gletscher F6461708



aqua F6461709



mint F6461767

New



rain forest F6461768

New



ashgrey F6461769



stone blue F6461770

New



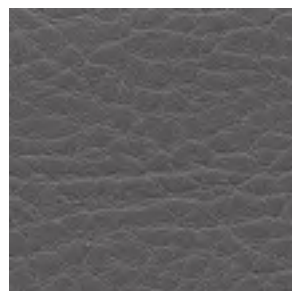
royal F6461710



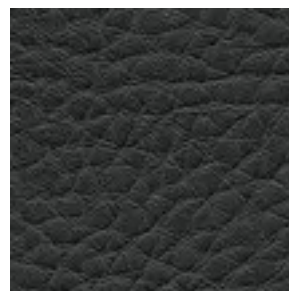
nightblue F6461729\*



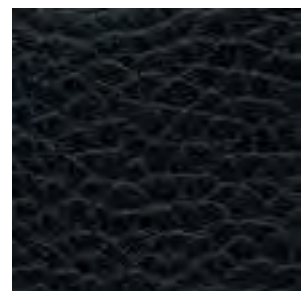
silbergrau F6461730



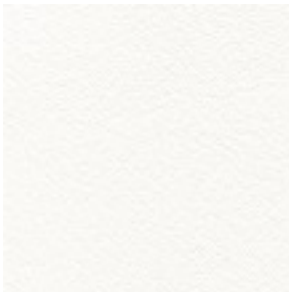
schiefergrau F6461731



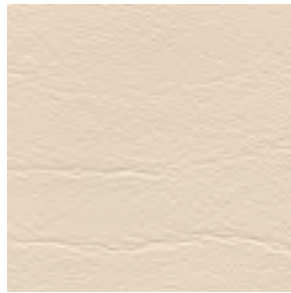
anthrazit F6461663



schwarz F6461659



weiss F6411143



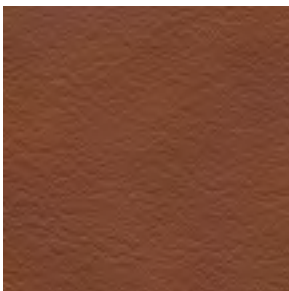
perle F6411008



birke F6411152



smoke F6411153



inka F6411145



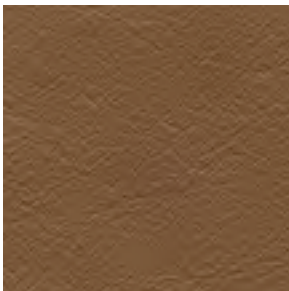
kenia F6411146



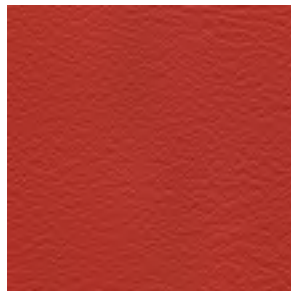
limone F6411195



olivgrün F6411196



torf F6411197



lachs F6411144



rubin F6411010 \*



amethyst F6411155



atoll F6411005 \*



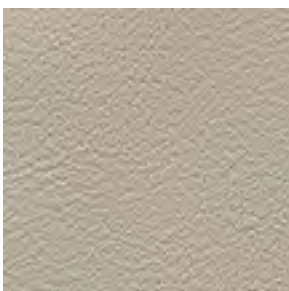
baltic F6411006



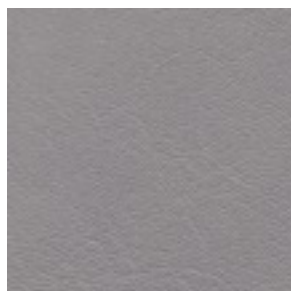
rauchblau F6411198\*



kirsche F6411154 \*



lichtgrau F6411199



platin F6411012 \*



anthrazit F6411160



schwarz F6411011





Public Area



Hospitality



Residential



Healthcare

**Materialzusammensetzung:**

ca. 85% PVC-Compound  
ca. 15% BW-Gestrick  
**Gewicht:** 780 +/- 50 g/m<sup>2</sup>  
**Dicke:** 1,3 +/- 0,2 mm  
**Rollenbreite:** 137 cm  
**Rollenlänge:** 30m

**Material composition:**

approx. 85% PVC-compound  
approx. 15% CO-knitted fabric  
**weight:** 780 +/- 50 g/m<sup>2</sup>  
**thickness:** 1.3 +/- 0.2 mm  
**roll width:** 137 cm  
**roll length:** 30m

**Composición del material:**

aprox. 85% compuesto de PVC  
aprox. 15% soporte textil de punto de algodón  
**Peso:** 780 +/- 50 g/m<sup>2</sup>  
**Espesor:** 1,3 +/- 0,2 mm  
**Ancho de rollo:** 137 cm  
**Largo de rollo:** 30m



langelig  
long-lasting  
larga vida útil



reißfest  
tear resistant  
resistente al desgarro



abriebfest  
abrasion resistant  
resistencia a la abrasión  
**DIN EN ISO 5470-2:**  
**Parotega NF:**  
**> 75 000 Martindale**  
**Palma NF:**  
**> 50 000 Martindale**



schwer entflammbar  
flame protection  
resistencia al fuego  
**DIN 4102-1 (Part 1, B1),**  
**DIN EN 13501-1 B, s3, d0**  
**DIN 66084 P-a,**  
**NF M1, AM 18,**  
**BS5852 IS-0+1+5,**  
**DIN EN 1021-1+2,**  
**DIN 4102-1 (B2),**  
**MVSS302, FAR 25.853,**  
**ÖNORM B3825 schwer**  
**brennbar (B1),**  
**ÖNORM A 3800-1 Q1,**  
**UNI 9175/87 (1.1M)**



pflegeleicht  
easy to clean  
fácil mantenimiento



lichtecht  
lightfast  
resistente a la luz  
**DIN EN ISO 105-B02,**  
**Stufe 7 / level 7 / nivel 7**



desinfektionsmittelbeständig  
disinfectant resistant  
resistente a los  
desinfectantes



blut- und urinbeständig  
blood- and urine resistant  
resistente a la sangre  
y a la orina



**0098-18**  
IMO FTPC Part 8

**Anwendung / Verarbeitung**

Geeignet für viele Arten von Bepolsterungen und Bespannungen in der Polsterindustrie. Besonders geeignet für den Einsatz im trendorientierten Wohn- und Objektbereich, in öffentlichen Gebäuden und Einrichtungen. Problemlose Verarbeitung nach den üblichen Verfahren (Nähen, Heften, Kleben, Nageln). Keine Lösemittelkleber verwenden!

**Sonstige Hinweise**

Für dauerhafte Freude an ihrem skai® Material bitte regelmäßig reinigen. Verschmutzungen durch Öle, Fette und Tinte müssen umgehend entfernt werden. Benutzen sie hierzu eine warme, milde Seifenlauge und ein Mikrofasertuch oder eine weiche Handbürste. Bitte keine Lösemittel, Chloride, Poliermittel, chem. Reinigungsmittel oder Wachspoliermittel einsetzen. Bitte beachten sie, dass Anfärbungen durch Jeans oder andere Textilien von jeglicher Herstellergarantie ausgenommen sind.

**Besondere Hinweise**

Unsere anwendungstechnischen Empfehlungen in Wort und Schrift, die wir aufgrund unserer Erfahrung entsprechend dem aktuellen Kenntnisstand weitergeben, sind unverbindlich und begründen kein Rechtsverhältnis und keine Nebenverpflichtungen aus dem Kaufvertrag. Sie entbinden den Käufer nicht davon, unsere Produkte für den vorgesehenen Verwendungszweck in eigener Verantwortung selbst zu prüfen. Im Übrigen gelten unsere allgemeinen Geschäftsbedingungen. Hiermit verlieren alle früheren, anderslautenden Regelungen ihre Gültigkeit.

**Application / Processing**

Suitable for many kinds of upholsteries and coverings in the upholstery industry. Especially suitable for the use in the modern residential and contract area, in public buildings and institutions. Problem-free processing in the usual procedures (sewing, tacking, sticking, nailing). Do not use solvent-based adhesives!

**Other instructions**

For durable joy with your skai® material, please clean regularly. Clean with warm water or a mild soap sud and a micro-fibre cloth or a soft hand brush. Stain caused by oil, fat or ink must be removed immediately. Please do not use solvents, chloride, abrasives, chemical cleaning agents or wax polishes. Please note that colorings caused by jeans or other textiles are excluded from any manufacturer's guarantee.

**Special notes**

Our written and spoken technical recommendations, which we provide based on our experience in accordance with the current state of knowledge, are nonbinding and do not constitute a legal relationship and are not additional obligations from the purchase agreement. They do not release the purchaser from checking our products for the intended use under his own responsibility. Otherwise, our general terms and conditions are in effect. All earlier provisions to the contrary hereby become invalid.

**Aplicaciones / Manipulación**

Apto para múltiples tipos de tapizado y revestimientos para la industria del mueble tapizado. Especialmente diseñado para el empleo en espacios modernos tanto públicos como privados, en edificios públicos e instituciones. Aplicación sencilla por medio de procedimientos habituales (cosido, hilvanado, pegado, clavado). No usar pegamento disolvente.

**Otros consejos**

Para disfrutar de su material skai® por muchos años, límpielo regularmente. Las manchas de aceites, grasas y tintas deben eliminarse de inmediato. Utilice para ello una solución jabonosa suave y templada y un paño de microfibra, o bien un cepillo de mano de cerdas blandas. No utilice disolventes, cloruros, pulimentos, limpiadores químicos ni abrillantadores de cera. Recuerde que la garantía del fabricante excluye cualquier transferencia de color causada por tejanos y otros materiales textiles.

**Advertencias especiales**

Nuestras recomendaciones técnicas de aplicación, verbales o escritas, que facilitemos sobre la base de nuestra experiencia y de los conocimientos técnicos más actuales, no son vinculantes en ningún caso ni constituyen un compromiso contractual o responsabilidades añadidas al contrato de compraventa. No eximen al comprador de verificar personalmente nuestros productos para el uso previsto y bajo su responsabilidad. En todo lo demás, se aplicarán nuestras condiciones generales. lo que supone la nulidad de cualquier otro acuerdo previo.

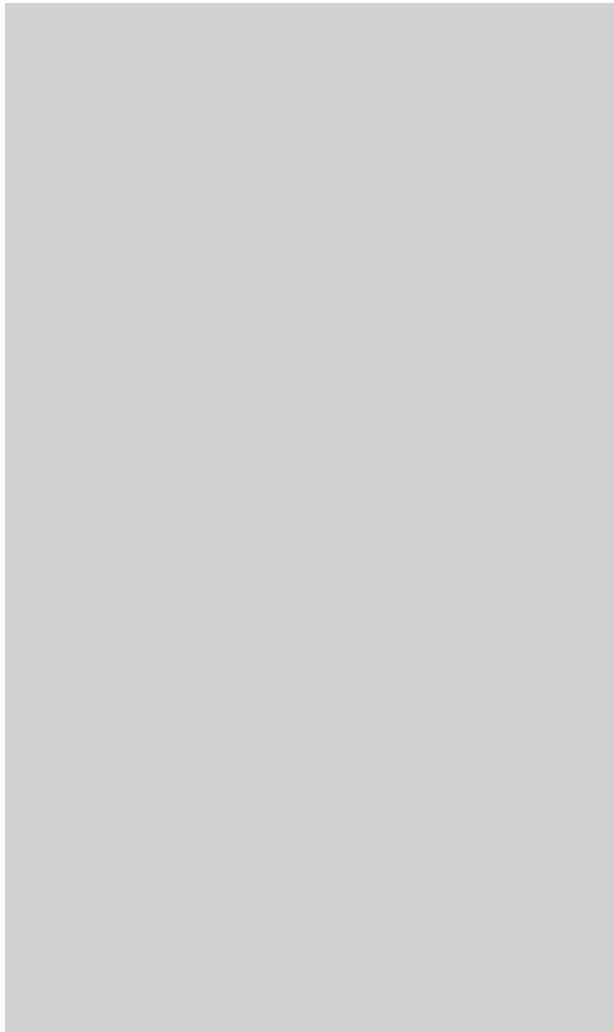


\* nach den gesetzlichen Bestimmungen prescribed by law de conformidad con las disposiciones legales

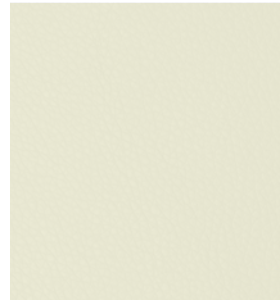


DIN EN ISO 9001  
DIN EN ISO 14000  
DIN EN ISO 50001

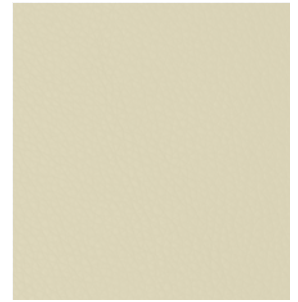
# Purfect



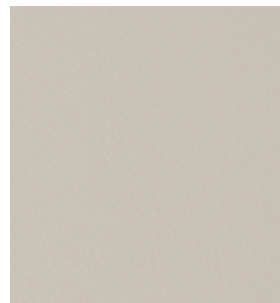
53593 • CONCRETE



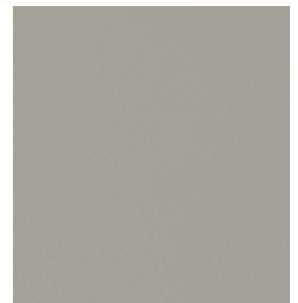
82417 • Vanilla Brilliance



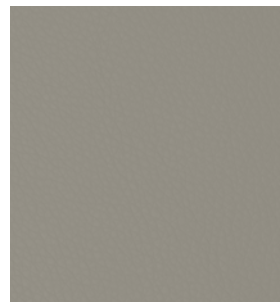
84176 • Bisquit



85352 • Cocos



87241 • Fudge



46508 • Peanut



Easy to clean



Antibacterial



Made in Europe



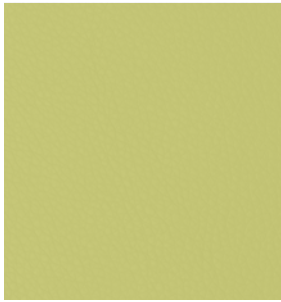
Waterproof



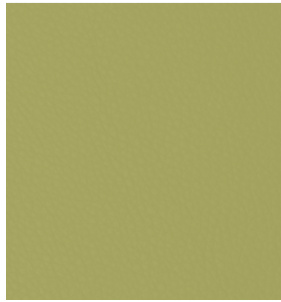
CRIB 5



Available from stock



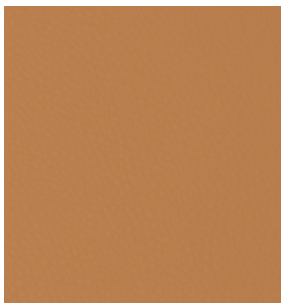
74007 • Kiwi



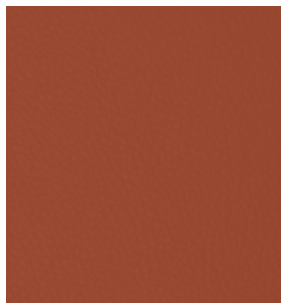
76236 • Olive



36519 • Mustard



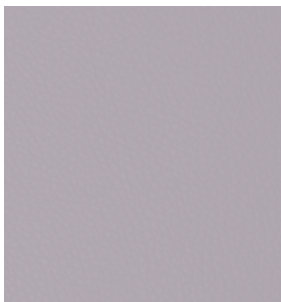
44184 • Henna



45633 • Ginger



24784 • Cranberry



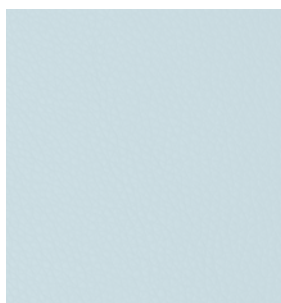
65072 • Velvet Plum



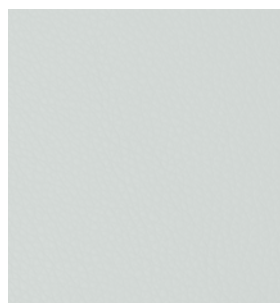
65307 • Mystic Purple



67403 • Aubergine



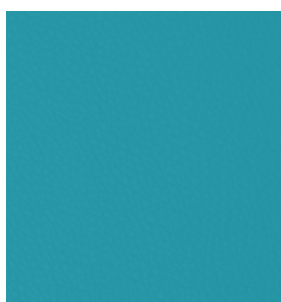
61602 • Ice Blue



72133 • Pepper Mint



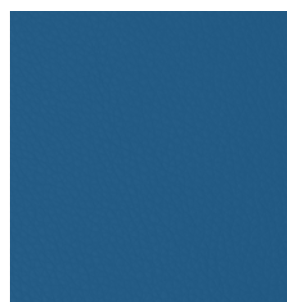
63174 • Vintage Blue



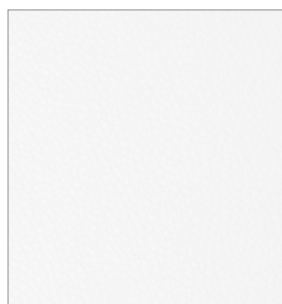
65066 • Florance



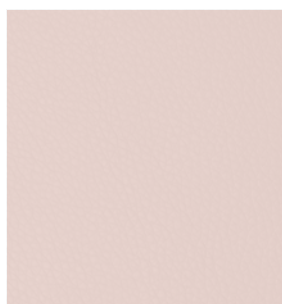
67382 • Babylon



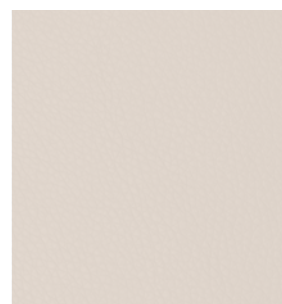
68746 • Majestic Blue



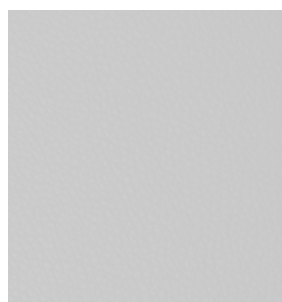
00800 • Snow White



22427 • Peach



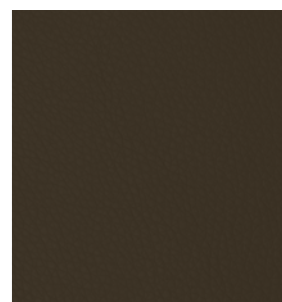
93086 • Ivory



53593 • Concrete



47124 • Cappuccino



48013 • Cocoa



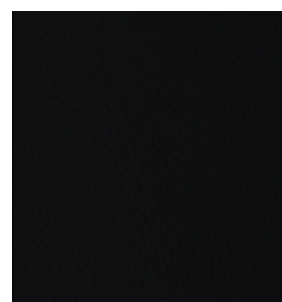
57841 • Cold Lava



58290 • Charcoal

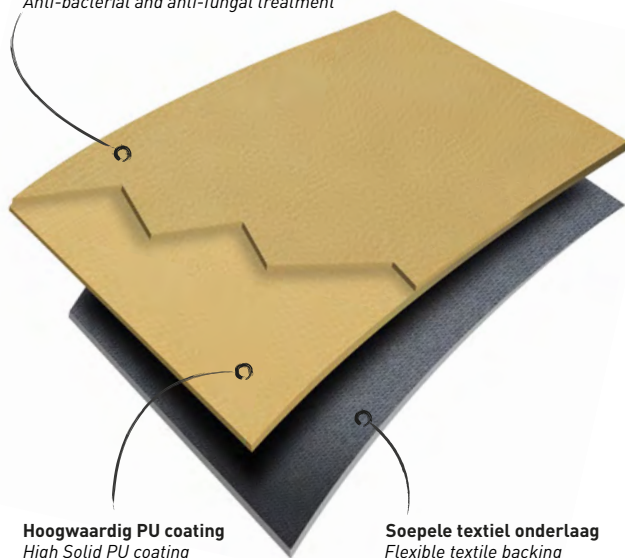


68523 • Iron



00110 • Black

**Antibacteriële en schimmelwerende behandeling**  
*Anti-bacterial and anti-fungal treatment*



**Hoogwaardig PU coating**  
*High Solid PU coating*

**Soepele textiel onderlaag**  
*Flexible textile backing*

## **EEN UITSTEKENDE PRESTERENDE EN EENVOUDIG TE REINIGEN POLYURETHAAN A HIGH PERFORMING AND EASY CLEANABLE POLYURETHANE**

Purfect voldoet aan de strengste eisen inzake brandweerstand en is uitermate geschikt voor ruimten waar een perfecte hygiëne van essentieel belang is. Het materiaal is vrij van PVC en ftalaten, waterdicht en voldoet aan de Oeko-Tex en Reach norm.

*Purfect meets the strictest requirements for fire resistance and is ideal for areas where perfect hygiene is essential. The coating is free of PVC and phthalates, waterproof and meets the Oeko-Tex and REACH standard.*



## TECHNISCHE EIGENSCHAPPEN / TECHNICAL PROPERTIES

Samenstelling / Composition	100% Polyurethaan / 100% Polyurethane
Onderlaag / Backing	Katoen / Cotton
Gewicht / Weight	595 g/m <sup>2</sup> ± 30 g/m <sup>2</sup>
Breedte / Width	140 cm
Rollengte / Roll length	30 lm
Dikte / Thickness	1.00 mm ± 0,10 mm

		<i>Normen/ standards</i>
Trekweerstand / Tensile strength	> 30 daN / 5 cm > 22 daN / 5 cm	ISO 1421
Scheurweerstand / Tear strength	> 2.2 daN > 2.0daN	ISO 4674-01
Wrijvingsweerstand / Abrasion resistance	> 500.000	EN ISO 5470-2 Martindale
Naadweerstand / Seam resistance	> 16 daN / 5cm > 16 daN / 5cm	ISO 13936-1
Uitrekking bij belasting 30N/5cm / Elongation under 30N/5cm	> 11% - 18%	ISO 1421
Hechtingsweerstand / Coating to fabric adhesion	> 3 daN / 5 cm	ISO 2411
Kleurvastheid / Colour light fastness	> 6	EN ISO 105 B02
Wrijftechtheid veslic                      Rub fastness veslic (behandeld met 70% ethanol)    (70% ethanol treatment)	Grade 4/5	ISO 11640
Kleurvastheid bij transpiratie / Colour fastness to perspiration	Grade 4	ISO 11641
Hydrolysis / Hydrolyse test (10 weeks)	Geslaagd / Pass	
Weerstand tegen bloed & urine / Surface restistance against blood and urine	Geslaagd / Pass	EN 12720
Oeko-tex	100	Class 1
Brandveiligheid / Flame retardancy	BS 5852 EN 1021 DIN 4102-1B2 IMO 2010 FTP code	Crib 5 1 & 2 B2 Annex 1 - Part 8
Kwaliteit / Quality		ISO 9001
Milieumanagement / Environmental management		ISO 14001

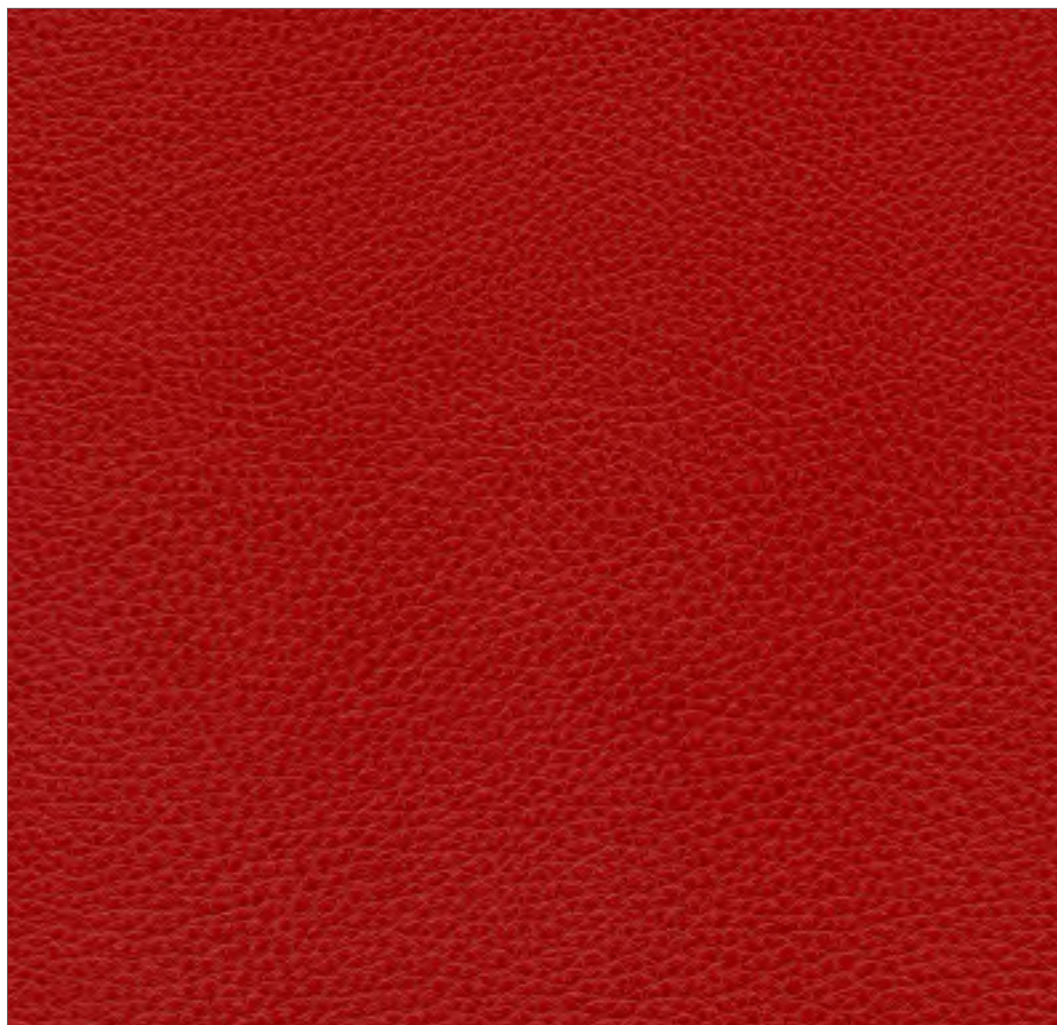
**AD<sup>2</sup> Textiles**

**LOODSTRAAT 34  
2718 RW ZOETERMEER**

**E: INFO@AD2TEXTILES.COM  
T: +31 (0)85 487 3030**

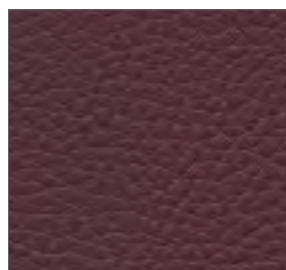


**WWW.AD2TEXTILES.COM**



Groseille 013 32 026

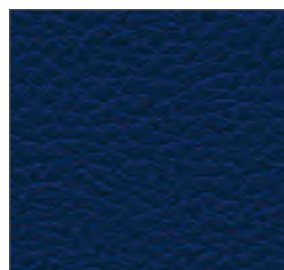
## WILD BERRIES LES BAIES SAUVAGES / WILDBEEREN



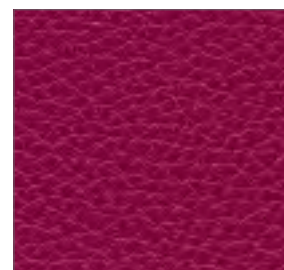
Quetsche 013 32 007



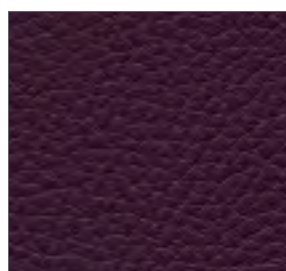
Tomate 013 32 044



Nuit 013 32 011



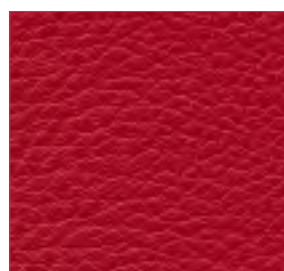
Begonia 013 32 046



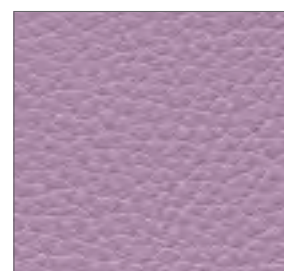
Myrtille 013 32 045



Morgon 013 32 016



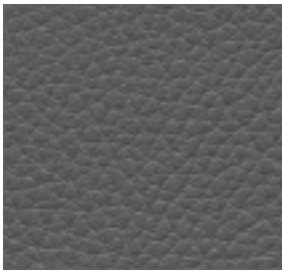
Pivoine 013 32 025



Lilas 013 32 008

## VEGETABLE PATCHES

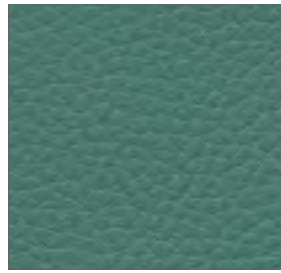
LES POTAGERS / GEMÜSEGARTEN



Souris 013 32 004



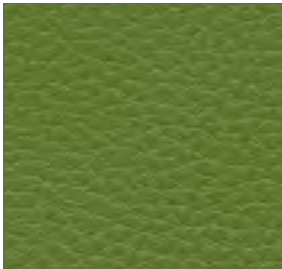
Dune 013 32 023



Vert 013 32 006



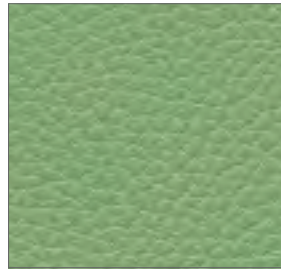
Mastic 013 32 013



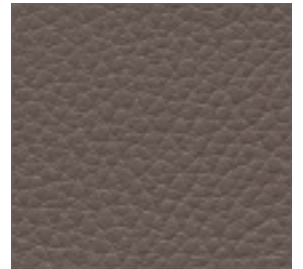
Amande 013 32 020



Seigle 013 32 027



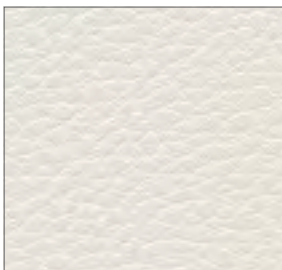
Menthe 013 32 042



Taupe 013 32 043

## REFRESHING FROSTS

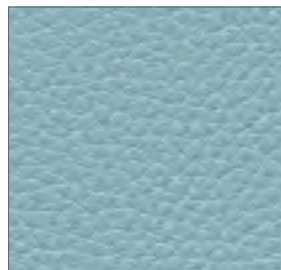
LES GIVRÉS DÉSAITÉRANTS / KÜHLER DURSTLÖSCHER



Blanc 013 32 019



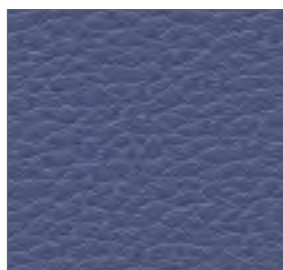
Glacier 013 32 059



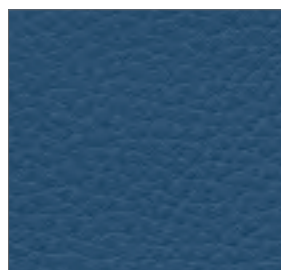
Aigue Marine 013 32 012



Pierre 013 32 050



Lavande 013 32 009



Petrole 013 32 060



## TANGY CITRUS

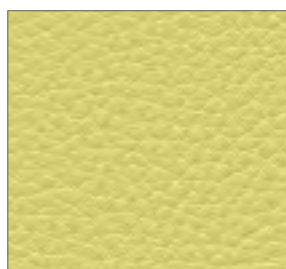
LES ACIDULÉS / ZITRUSFRÜCHTE



Granny 013 32 052



Mirabelle 013 32 021



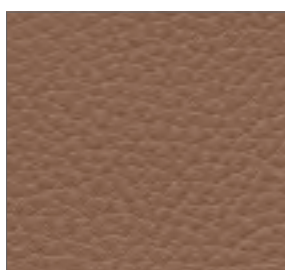
Endive 013 32 032



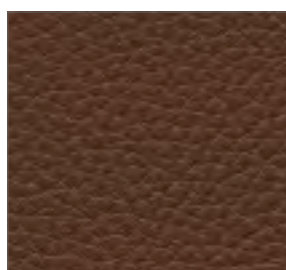
Turquoise 013 32 047

## CARAMEL TOFFEE

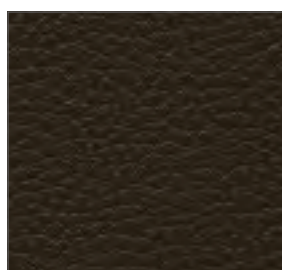
LES CAMELS TOFFEE / KARAMELL-TOFFEE



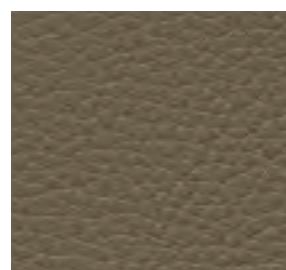
Capuccino 013 32 038



Châtaigne 013 32 003



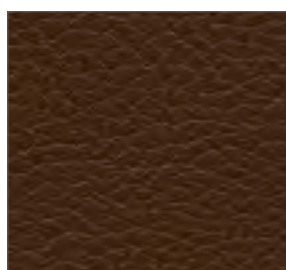
Chocolat 013 32 001



Terre 013 32 048



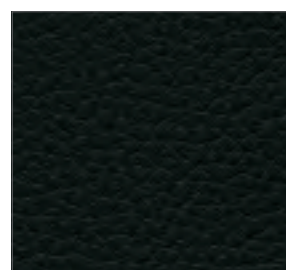
Tomette 013 32 014



Café 013 32 049



Citrouille 013 32 015



Anthracite 013 32 002

USE ► UPHOLSTERED SEATS  
UTILISATION ► REVÊTEMENT DE SIÈGES  
VERWENDUNG ► POLSTERMÖBEL

Composition Composition / Materialzusammensetzung	PVC 85 % Cotton 15 %
Weight Poids / Gewicht	830 g +/- 40 g/m <sup>2</sup>
Width Laize / Breite	138 / 140 cm
Roll length Longueur des pièces / Rollenlänge	≈ 30 ml
Thickness Épaisseur / Materialstärke	1,3 mm +/- 0,1 mm



**Fire proof norm**  
Classement feu  
Brandschutznorm  
M1 (NFP 92503)  
AM 18 (NFD 60-013)  
BS 5852 crib 5  
B2 (DIN 4102)  
EN 1021.1-2  
Cs3d0 (EN 13501-1)  
IMO A652  
CATB 117 E  
CATB 133  
NY/NJ-Port Authority  
UFAC Fabric class 1  
FAR 25853 App F Part 1



**Abrasion resistance (ISO 5470-2)**  
Abrasion Martindale  
Scheuertouren  
150 000 cycles (12 KPa)



**Colour fastness to artificial light**  
Tenue à la lumière  
Lichtechtheit  
≥ 6



**Phtalates free**  
Sans Phtalates  
Phtalate frei

Technical data sheet is available upon request  
Fiche technique disponible sur simple demande  
Datenblatt verfügbar auf Anfrage



182 Route de Paris  
95420 Nucourt - France  
Tel. : +33 (0)1 30 27 28 00  
Fax : +33 (0)1 34 67 49 89  
Email : griffine@griffine.com  
www.cotting-group.com



Molenstraat 207  
8710 Wielsbeke - Belgium  
Tel. : +32 (0)56 66 52 75  
Fax : +32 (0)56 66 41 30  
Email : info@plastibert.be  
www.plastibert.be



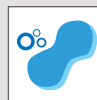
**Efficacy against bacteria (MRSA).**  
Efficacité contre les bactéries (MRSA).  
Wirksamkeit gegen Bakterien (MRSA).



**BV 0062 Wheel Mark certification for all products used for seats covering in cruise ships and ferries.**

Barre à Roue BV 0062 pour les produits destinés au revêtement de sièges dans les navires de transport de personnes.

IMO Zertifikat für alle Produkte für den Einsatz von Sitzpolstern auf Fähren und Kreuzfahrtschiffen.



**Clean regularly with a pH neutral soap and a soft brush. Always rinse with clear water. Do not use strong detergents, solvent cleaners, polish, wax, patent chemicals or other products not recommended by Cotting. Some stains like**

ball pen, coffee, wine, eosin and also jeans, should be cleaned immediately to avoid any permanent absorption into the vinyl. Be careful : we cannot be held responsible for transfer problems generated by dyes of poor quality. Cotting waives all responsibility for problems arisen out of ignoring the cleaning instructions.

Pour un entretien efficace, nettoyer régulièrement avec un savon au pH neutre et une brosse douce. Dans tous les cas rincer à l'eau claire. Tous détergents, solvants, détachants du commerce ne figurant pas dans la NF collectivité ainsi que tous les produits non conseillés par nos soins sont à proscrire. Nettoyer immédiatement les tâches telles que le stylo, café, vin, éosine ou encore jeans afin d'éviter une migration définitive dans la masse du tissu enduit. Attention: Nous ne pouvons être tenus responsables des problèmes de migrations liés à une teinture de mauvaise qualité. Cotting dégage toute responsabilité quant aux problèmes encourus liés au non respect des consignes d'entretien.

Regelmässige Reinigung mit lauwarmen Wasser, pH neutraler Seife und einer weichen Bürste. Verwenden Sie keine starken, abrasiven oder lösungsmittelhaltige Reinigungsmittel, Polituren, Wachse, chemische Reiniger oder andere, nicht von Cotting empfohlene Produkte. Flecken insbesondere von Kugelschreibern, Kaffee, Wein, Blut oder Jeansstoff sollten sofort gereinigt werden, da sie später unter Umständen nicht mehr rückstandslos entfernt werden könnten. Warnung: Cotting übernimmt keine Haftung dafür, dass Verfärbungen des Kunstleders durch nicht ausreichend farbbeständige Textilien verursacht wurden. Cotting übernimmt keine Haftung für Probleme, die durch die Nichtbeachtung der Pflegehinweise entstanden sind.



**Product certified CTB Components by the FCBA technological institute. Mechanical tests, durability, reaction to fire and resistance to food, household, pharmaceutical products, according to NF Office Excellence Certified, NF furniture, professional NF furniture.**

Produit certifié CTB Composants par l'institut technologique FCBA. Essais de mécanique, durabilité, réaction au feu et tenue aux produits alimentaires, ménagers, pharmaceutiques, conformément aux référentiels NF Office Excellence Certifiée, NF mobilier professionnel, NF ameublement.

Die Qualität wurde vom französischen Prüf- und Technologieinstitut FCBA gemäß den CTB Komponenten zertifiziert. Entsprechend den Standards für den Einsatz in Büros (NF Office Excellence), Wohneinrichtungen (NF Furniture) und Objekteinrichtungen (Professional NF Furniture) wurden mechanische Tests, Tests auf Haltbarkeit, Brennverhalten und Beständigkeit gegenüber Lebensmitteln, Haushaltsprodukten und Pharmaprodukten durchgeführt.

# HARLOW

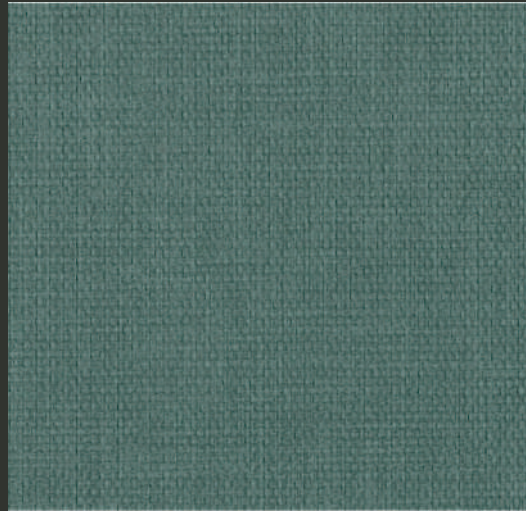
# INDOOR - OUTDOOR



6014 HAR  
TOCOS



6013 HAR  
BUCKWEED



6033 HAR  
KELP (ECO) 



6028 HAR  
LUCUMA




6030 HAR  
NONI



6029 HAR  
MORINGA



6036 HAR  
ROOIBOS (ECO) 



6027 HAR  
COCONUT




6019 HAR  
PERU MACA




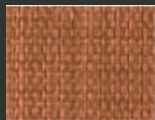
6023 HAR  
SWEET POTATO



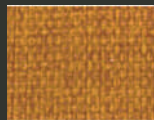
6032 HAR  
MATCHA (ECO) 



6034 HAR  
SPIRULINA (ECO) 



6012 HAR  
BUTTERNUT  
SQUASH




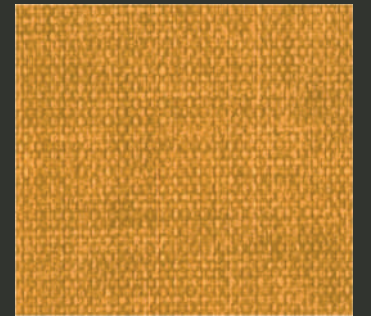
6015 HAR  
INCA BERRY



6018 HAR  
KALE



6037 HAR  
HIBISCUS (ECO) 



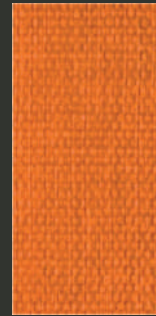
6021 HAR  
TURMERIC



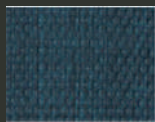
6022 HAR  
CINNAMON



6002 HAR  
GUARANA



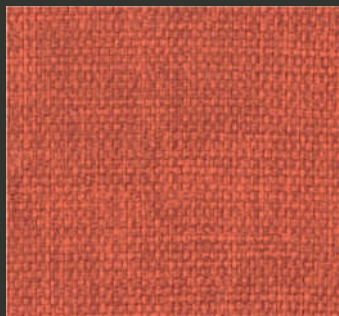
6016 HAR  
WINTER SQUASH



6007 HAR  
ELDERBERRY



6035 HAR  
MAJIK (ECO) 



6001 HAR  
GOJI BERRY



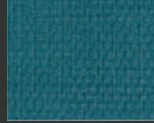
6020 HAR  
BEE POLLEN



6026 HAR  
KHAJUR



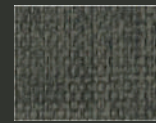
6006 HAR  
PEA FLOWER



6008 HAR  
HUCKLEBERRY



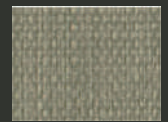
6004 HAR  
ALFALFA



6025 HAR  
CAROB



6024 HAR  
CACAO BEAN



6017 HAR  
FLAX SEED



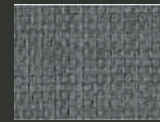
6005 HAR  
ACEROLA



6009 HAR  
BLACK SOYBEAN

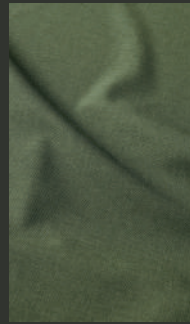


6011 HAR  
CHIA SEED



6010 HAR  
LENTILS





**CHARACTERISTICS**

**INDOOR - OUTDOOR**

Composition:	100% PVC Phthalate Free
Composition ECO colors:	45% sustainable content:
BIO-based Plasticizer:	27%, Recycled PET: 18%
Backing:	100% Polyester
Weight:	730 g/m <sup>2</sup>
Roll Width:	min. 137 cm
Roll Length:	+/- 30 m
Abrasion Resistance:	>800.000 cycles (MARTINDALE)
Resistance to oils:	Bending Test DIN 53 359 No change
Blood Resistance Test:	TITV Greiz Passed
Urine Resistance Test:	DIN EN ISO 32100 Passed; No changes, note 5
Cold Crack:	-29 °C 4.05J impact FLTM BN 128 - 01
Heat Ageing: (85 °C, 7 days)	LP - 463LB - 13 - 01 Rating 4 ISO Grey Scale
Light Fastness:	>6 ISO EN 105-B02 (Blue Wool Scale) 4-5 ISO EN 105-B04 (Grey Scale)
Colour Fastness to Sea Water:	DIN EN ISO 105 - E02 4 - 5 minimum
Chlorinated Water:	DIN EN ISO 105 - E03 4 minimum
Artificial Saliva:	DIN 53 160 - 1 Passed, Note 5
Artificial Sweat:	DIN 53 160 - 2 Passed, Note 5
Perspiration:	DIN EN ISO 105 E - 04 Passed, Note 4 - 5
Crocking:	DIN EN ISO 105 - X 12 Dry-Minimum 5.0 AATCC Wet-Minimum 5.0 AATCC
Flame Retardancy*:	EU EN 1021 Part 1 & 2 EU IMO FTP 2010 Code MSC.307 (88) Annex 1 Part 8 EU (MED) Marine Equipment Directive DE DIN 4102 (B2) FR NF P 92-503 (M2) IT UNI 9175 Classe 1.IM AT ÖNORM B 3825, Gruppe 1 AT ÖNORM A 3800 Teil 1 US SAE J369/MVSS 302 US FAR 25.853 (a) Appendix F, Part I, (a), 1, (ii) US FED-STD-191A Test 5903

\*This term and any corresponding data refer to the typical performance in the specific tests indicated and should not be construed to imply the behaviour of this or any other material under actual fire conditions.

**FINISHES AND TREATMENTS**

PHthalate FREE

Sanitized antimicrobial hygiene safety

**SUSTAINABILITY**

OEKO-TEX® Standard 100  
REACH / RoHS

**SAMPLES AND ENQUIRES**

samples: [samples@vyvafabrics.nl](mailto:samples@vyvafabrics.nl) | orders: [info@vyvafabrics.nl](mailto:info@vyvafabrics.nl)

**CARE AND CLEANING**

For optimum care and cleaning please read the following instructions and recommendations.

**Cleaning instructions**

Brush off dirt before it becomes embedded in the vinyl and wipe up spills or clean quickly after a stain appears. The quicker you clean spills and stains, the easier they can be removed.

1. Use a mixture of mild-soap (pH neutral) and water solution (use 1 part soft soap and 10 parts water) to clean vinyl with a white soft cloth or sponge.
  2. Use clean water with a soft cloth to remove excess soap.
  3. Immediately dry vinyl with a white, clean, soft cloth. No soap should remain on the vinyl surface.
  4. Light colors, such as white, require more frequent cleaning.
- Note: If dirt is embedded, you can rub vinyl moderately with a soft brush and soapy solution, then go to step 2 and 3.

**Cleaning methods to remove tougher stains**

1. The key to keeping vinyl upholstery clean is removing grease, dirt, and residues as quickly as possible after the spill occurs.
2. Do not use abrasive or solvent cleaners, especially cleaners containing concentrated bleach, petroleum distillates or concentrated detergents.
3. For dried stains, vinyl can be cleaned with a soft detergent and water mixture (use 1 part soft powder detergent and 5 parts water). Apply the solution to the stain and wait a minute or two to allow the detergent to act. Then lightly rub the area and rinse thoroughly with clean water. Be sure to completely remove all soap residues. Dry vinyl with a clean, soft cloth.
4. Liquid spills (Coffee, Tea, Liquor, Wine, Sun-tan Lotion, Soft Drinks, etc.) If cleaned before the liquid dries, the spill can easily be removed using a paper towel to absorb the liquid. Clean the area with a moist and clean cloth, then blot dry. In case that the spill is already dried, go to step 3.
5. Thick, moist spills (Ketchup, Mustard, etc.): Lift as much of the spill as possible with a damp cloth, rotating the cloth as you wipe without pressing it into the vinyl surface. Repeat this process as needed, and then blot the vinyl dry. If residue still remains, go to step 3. Flush the area with water and apply a clean cloth, then blot dry.
6. Blood, Urine Stains, Bird Excreta: Sponge with soapy water containing a small amount of household ammonia (1 part pH neutral soap, 5 parts household ammonia, 5 parts water). Clean the excess soap by gentle rubbing with a moist cloth. Any remaining stain should be washed with diluted bleach (10% bleach, 90% water). Dry with a clean cloth.
7. Lipstick, Grease, Oil, Eye shadow, Shoe Polish: Apply a small quantity of household cleaner (like Fantastik® or Formula 409®) mixed with water (1 part cleaner, 1 part water) by means of cloth with gentle rubbing. Use a moist cloth until no cleaner residues remain. Dry with a clean cloth.
8. Ballpoint Ink, Permanent Marker: Ink spots will stain vinyl permanently. Immediate wiping with a 1:1 mixture of Isopropyl alcohol and water will remove much of the stain. Follow up with clean water rinses and towel dry.



ANTIMICROBIAL



OEKO-TEX® STANDARD 100



FLAME RETARDANT



STAIN RESISTANT



WATERPROOF



PHthalate FREE



REACH COMPLIANT



INDOOR OUTDOOR

# VALENCIA

Indoor



107-2074 (BS)  
CHERRY



107-2021 (BS)  
PINK



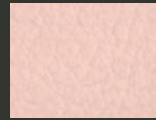
107-2062 (BS)  
PORT



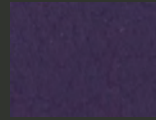
107-2001  
MERLOT



107-2002 (BS)  
BERRY



107-2113 (BS)  
LOTUS



107-7001 (BS)  
AMETHYST



107-6012 (BS)  
SAFRAN



107-6019 (BS)  
ORANGE



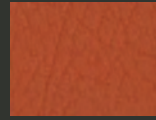
107-0035 (BS)  
TERRACOTTA



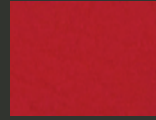
107-2112 (BS)  
TOMATO



107-2115 (BS)  
CHESTNUT



107-6003  
NECTARINE



107-2075 (BS)  
RED



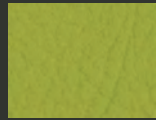
107-5069 (BS)  
GREEN



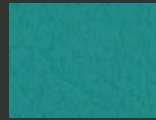
107-2119 (BS)  
TEAL



107-5041 (BS)  
APPLE



107-2110 (BS)  
AVOCADO



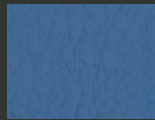
107-5057 (BS)  
TURQUOISE



107-5001 (BS)  
OLIVE



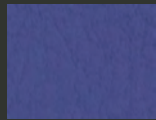
107-5056 (BS)  
JADE



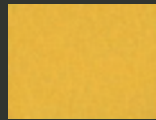
107-3001 (BS)  
LAVENDER



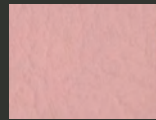
107-3067 (BS)  
DELFT



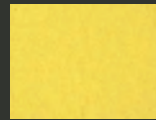
107-2118 (BS)  
ULTRAVIOLET



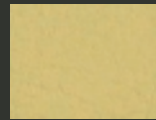
107-2111 (BS)  
SQUASH



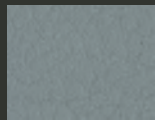
107-2114 (BS)  
ROSE



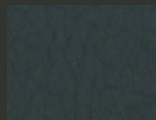
107-2020 (BS)  
SUN



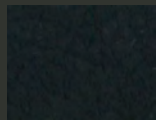
107-2109 (BS)  
CITRUS



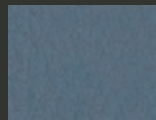
107-4045 (BS)  
PEARL



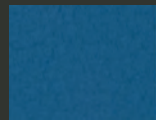
107-4003 (BS)  
GRAPHITE



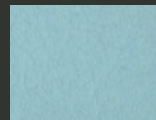
107-9035 (BS)  
BLACK



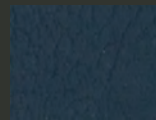
107-4042 (BS)  
TITAN



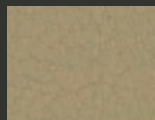
107-3069 (BS)  
BALTIC



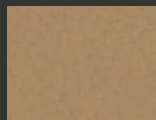
107-2106 (BS)  
CORAL



107-2108 (BS)  
NIGHT



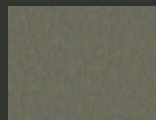
107-1001  
CHAMPAGNE



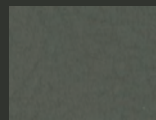
107-2117 (BS)  
CASHMERE



107-9001  
SUMATRA



107-4001  
MUSHROOM



107-5002  
MOSS



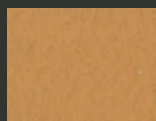
107-1050 (BS)  
BEIGE



107-0002  
COGNAC



107-0033 (BS)  
BEECH



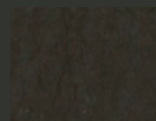
107-2116 (BS)  
CAMEL



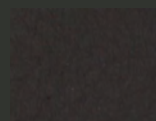
107-6002 (BS)  
BRONZE



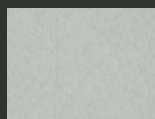
107-6013 (BS)  
MELONE



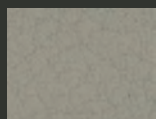
107-0001 (BS)  
PRALINE



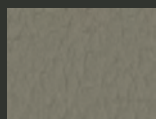
107-0020 (BS)  
MOCCA



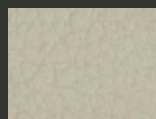
107-4040 (BS)  
AUSTER



107-4044 (BS)  
WARM GREY



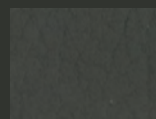
107-0034 (BS)  
TAUPE



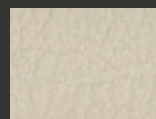
107-1049 (BS)  
LINNEN



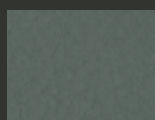
107-9607 (BS)  
PURE WHITE



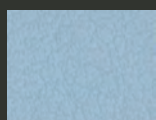
107-4041 (BS)  
METEOR



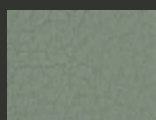
107-1048 (BS)  
SISAL



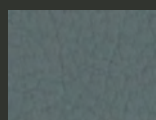
107-4052 (BS)  
LIGHTGREY



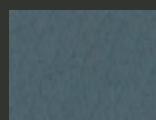
107-2107 (BS)  
SKYLIGHT



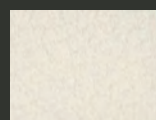
107-4002 (BS)  
LAUREL



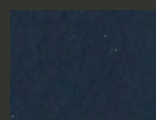
107-4043 (BS)  
PLATIN



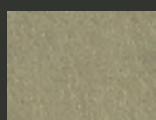
107-5065 (BS)  
PETROL



107-8032 (BS)  
WHITE



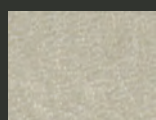
107-3068 (BS)  
MARINE



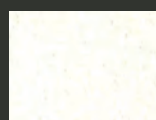
107-6020 (BS)  
GOLD



107-4020 (BS)  
SILVER



107-1020 (BS)  
IVORY



107-8020 (BS)  
PEARLESSENCE



# MAGLIA

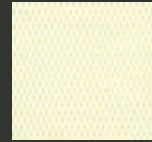
Indoor - Outdoor



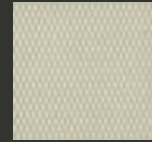
MAGLIA 15001 MAG  
UYUNI



GLOBE 2378  
SUGAR



GLOBE 2431  
SHELL



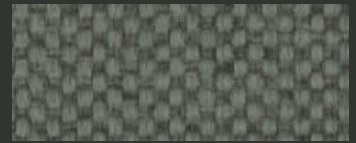
GLOBE 2380  
TUSK



GLOBE 2381  
PUTTY



MAGLIA 12000 MAG  
PRIMROSE



MAGLIA 14537 MAG  
TRUFFLE



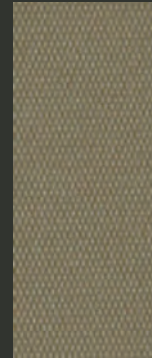
GLOBE 2427  
ORCHARD



GLOBE 2398  
IGUANA



GLOBE 2399  
HEDGE



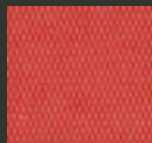
GLOBE 2429  
WOODBINE



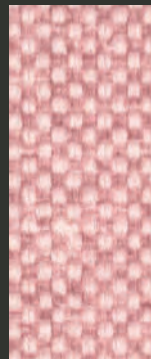
GLOBE 2430  
SASSY



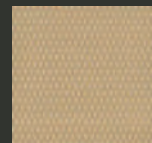
MAGLIA 10406 MAG  
SAGE



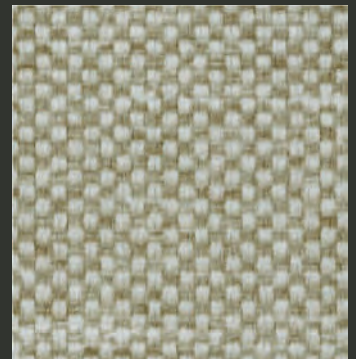
GLOBE 2387  
RED PEPPER



14203 MAG  
BLOSSUM



GLOBE 2392  
HEMP



MAGLIA 16025 MAG  
GINGER



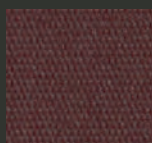
GLOBE 2434  
MAUVE



GLOBE 2383  
AUTUMN



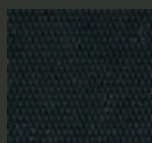
GLOBE 2388  
CASHEW



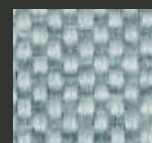
GLOBE 2422  
MERLOT



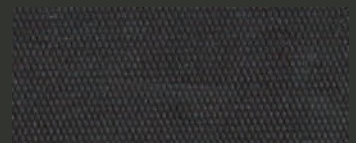
MAGLIA 14227 MAG  
MARS



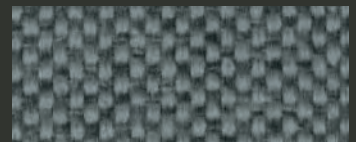
GLOBE 2397  
EBONY



14008 MAG  
ALASKA



GLOBE 2389  
NUBIAN



MAGLIA 16016 MAG  
THUNDER



# MAGLIA

# Indoor - Outdoor



MAGLIA 16443 MAG  
GREENLAND



GLOBE 2423  
PETROL



GLOBE 2425  
CELESTE



GLOBE 2428  
SKYWAY



MAGLIA 10003 MAG  
BREEZE



GLOBE 2379  
QUICKSILVER



GLOBE 2390  
POOL



MAGLIA 12003 MAG  
SKY



GLOBE 2424  
SHETLAND



MAGLIA 18022 MAG  
SAFARI



GLOBE 2426  
ADMIRAL



MAGLIA 15559 MAG  
INDIGO



12420 MAG  
SERENITY



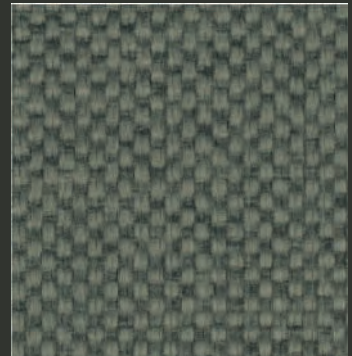
MAGLIA 18056 MAG  
URBAN



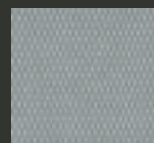
MAGLIA 10031 MAG  
ARMORY



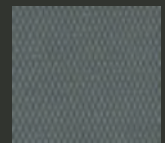
MAGLIA 11702 MAG  
DOVETAIL



MAGLIA 13616 MAG  
EARTH



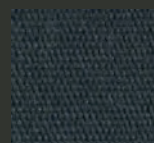
GLOBE 2385  
CLIFF



GLOBE 2393  
IRON



MAGLIA 17026 MAG  
GRANITE



GLOBE 2421  
CARBON



15450 MAG  
MIDNIGHT



NEW COLOURS  
MAGLIA | GLOBE

INDOOR - OUTDOOR



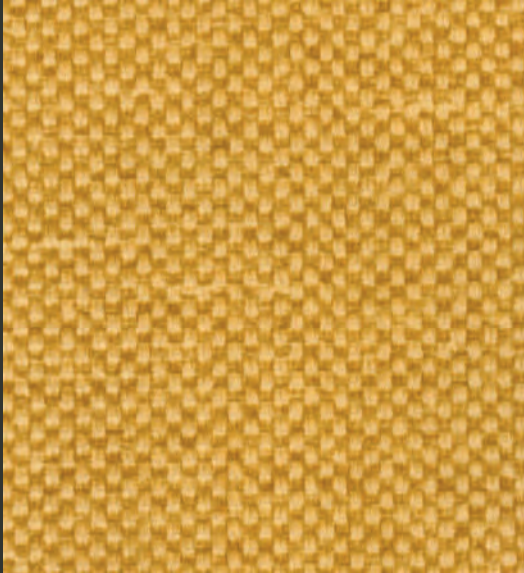
2457 GLOBE  
PENNY



16018 MAGLIA  
OAK



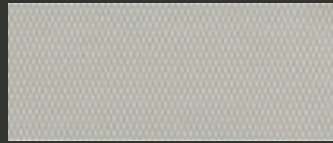
2459 GLOBE  
TERRAIN



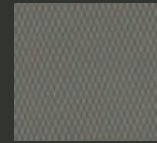
16029 MAGLIA  
HIVE



16019 MAGLIA  
GRIZZLY



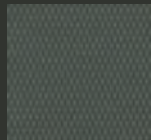
2456 GLOBE  
PALE SMOKE



2455 GLOBE  
PATH



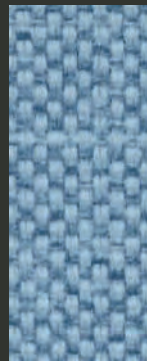
16020 MAGLIA  
MAUI



2454 GLOBE  
CONCRETE



16031 MAGLIA  
ASH



16023 MAGLIA  
KYANITE



16017 MAGLIA  
ARCTIC



2458 GLOBE  
BROOK



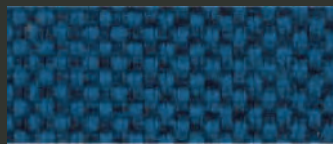
16021 MAGLIA  
FJORD



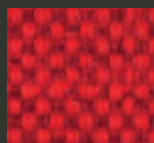
16022 MAGLIA  
SVALBARD



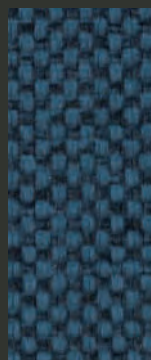
16030 MAGLIA  
ACAI



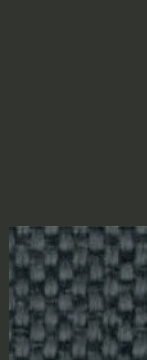
16027 MAGLIA  
TAHOE



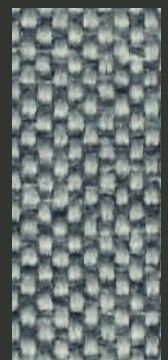
16026 MAGLIA  
MAPLE



16028 MAGLIA  
MINUIT



16032 MAGLIA  
BLACKCAVE



16024 MAGLIA  
MONOCHROME



2460 GLOBE  
OCTOPUS



## CHARACTERISTICS INDOOR - OUTDOOR

Composition:	Topcoat :Vinyl
Backing:	100% Polyester Hi-Loft <sup>2</sup> ™
Weight:	680 gr/m <sup>2</sup>
Roll Width:	min. 137 cm
Roll Length:	+/- 30 m
Abrasion:	>100.000 cycles (MARTINDALE)
Cold Crack:	-29 °C
UV-Resistance:	ISO 105 B02:≥ 7/8 (Blue Wool Scale) ISO 104 B04:≥ 4/5 (Grey Scale)
Flame retardancy*:	EU EN 1021 Part 1 & 2 EU ECE R 118.02 Anx. 6,7 & 8 EU (MED) Marine Equipment Directive EU IMO 2010 FTP Part 8 EU EN 71-2:2006+A1:2007 Safety of Toys - part 2 DE DIN 4102 B2 IT UNI 9175 Classe 1.1M ES NE 23.727-90 1R/M.2 FR NF P 92-503 (M2) AT ÖNORM B 3825, Gruppe 1 AT ÖNORM A 3800 Teil 1 US FMVSS302 US CAL TB 117-2013, Sec. E US FAR 25/853

\*This term and any corresponding data refer to the typical performance in the specific tests indicated and should not be construed to imply the behaviour of this or any other material under actual fire conditions.

## FINISHES AND TREATMENTS

PERMABLOK<sup>3</sup>® PHTHALATE FREE  
ADVANCED VINYL PROTECTION

Virucidal Activity:	ISO 18184:2019: <sup>1</sup> Coated Fabrics treated with PERMABLOK <sup>3</sup> ® are proven to reduce the presence of Coronavirus** by more than 90% within one hour of contact. ISO 21702:2019: <sup>2</sup> All the Coated fabrics treated with PERMABLOK <sup>3</sup> ® are capable of reducing the Coronavirus** activity by 99.9% within 24 hours of exposure on the surface.
---------------------	--

Bacteriostatic Properties:	ISO 22196:2011. Value of antibacterial*** activity R>2
----------------------------	--

SUSTAINABILITY	eco <sup>sense</sup> ISO 14001 Environmental Management Carbon Neutral REACH   RoHS
----------------	--

## SAMPLES AND ENQUIRES

samples: [samples@vyvafabrics.nl](mailto:samples@vyvafabrics.nl) | orders: [info@vyvafabrics.nl](mailto:info@vyvafabrics.nl)

## CARE AND CLEANING



For optimum care and cleaning please read the following instructions and recommendations.

### Disinfectant Use

The following information refers to the performance of PERMABLOK<sup>3</sup>® products in specific tests, conducted under laboratory conditions. Results may vary under actual conditions:

- Asepticare TB + II • Antifect (in 0.5 % dilution) • Caviwipes XL Packed
- Cleanisept Wipes • Clorox Healthcare Bleach • Germicidal Wipes
- Coverage Plus Germicidal Wipes • Desomed rapid • FD 366
- Hydrogen Peroxide Cleaner Disinfectant Wipes • Instrunet Anionsurf
- Lysol Foaming Disinfectant Cleaner • Microzid • Oxivir TB Wipes
- Oxycide Diluted -3oz/gl in water • PDI Sani-cloth bleach wipes
- Sanicloth AF 3 • Sodium Hypochlorite. Disinfectant. Bletach cleaner. Dilution: 1:10 mix of bleach and water. • Surfanios Premium (in 0,25% dilution) • Surfa'Safe Premium (in 0,25% dilution) • Super Sani-cloth
- Virex II 256 (1:256 Dilution) • Virox 5 Rtu • Wet wipe • Wex Cide 128 (1:128 dilution)

Rinse the area with clean water, then dry with a clean, lint-free cloth after using any disinfectants and cleaners.

### Cleaning after Disinfection:

The coated fabric should be cleaned periodically in order to maintain its appearance and prevent build-up of dirt and contaminants. Any stain, spills, or soiling should be cleaned up immediately to prevent the possibility of permanent staining. Use a mixture of 1:1 liquid soap (neutral pH) and water or our approved cleaning products for coated fabrics to remove stains on the surface of the material. Completely remove excess cleaner with a white, clean, damp cloth; and dry the surfaces afterwards. Lacquers, strong cleaners, detergents, xylene-based solutions, acetone, or ketone (MEK) cause immediate damage and contribute to the deterioration of the material. The use of such cleaners is at the owner's risk.

### Cleaning methods to remove tougher stains

**Step 1:** Coffee, juice, red wine, sauces, chocolate, grease, crayon and suntan lotion. Remove excess spill with a damp cloth. Clean with a 1:1 mix of neutral liquid soap and water. Next, rinse with clean water and dry.

**Step 2:** Make-up Use a straight application of neutral PH soap. Wipe with a clean white cloth or soft brush, rinse with clean water, and dry.

**Step 3:** Blood, urine, faeces and all other tough stains Use a 1:10 mix of Isopropyl alcohol and water. Rinse thoroughly with clean water and dry.

For cleaning: use a soft white cotton cloth saturated with the recommended cleaning agent and rub the stain in random circles, ten times or more. Pat dry with another soft white cotton cloth and check the results. Do not use steel bristle brushes, abrasive scouring pads or metal, these cause permanent damage to the fabric. Methods 2 & 3 are not recommended for everyday cleaning! After cleaning, rinse the area with clean water, then dry with a clean, lint-free cloth. Failure to remove chemical residue will cause discolouration of the coated fabric surface to manifest itself earlier in the life cycle of the product.



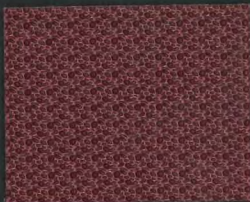


HITCH

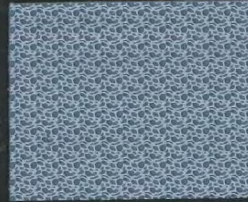
Indoor - Outdoor



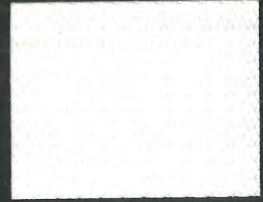
8999-HIT HITCH PORCELAIN



8994-HIT RAISIN



8998-HIT CERULEAN



8962-HIT ICEBERG



8915-HIT LAVA



8995-HIT CIRUELA



8922-HIT LIMEADE





8963-HIT AVALANCHE



8916-HIT NEUTRA



8901-HIT METEORITE



8965-HIT STARFISH



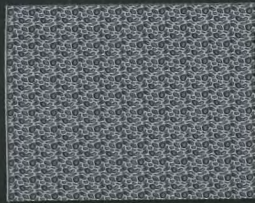
8912-HIT PUTTY



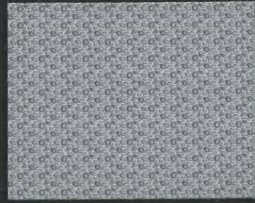
8953-HIT MAHOGANY



8964-HIT SEASHELL



8903-HIT PLATINUM



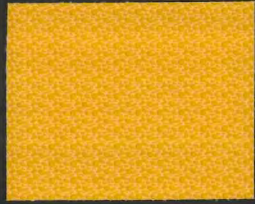
8961-HIT ZINC



8920-HIT JAVA



8911-HIT BRILLIANT ORANGE



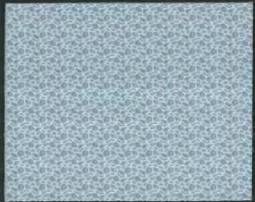
8990-HIT FRESIA



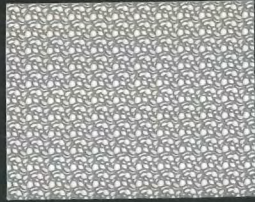
8909-HIT SUNFLOWER



8991-HIT TANGERINE



8999-HIT PORCELAIN



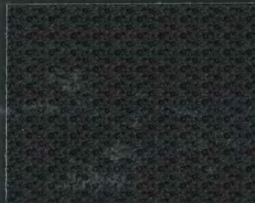
8960-HIT ALLOY



8913-HIT ZEST



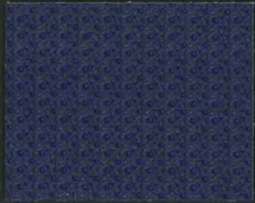
8900-HIT PASTEL



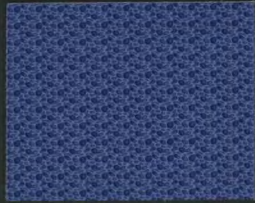
8988-HIT LAKRITZ



8957-HIT LEAD



8918-HIT INDIGO



8914-HIT SAPPHIRE



8904-HIT CARBON

s.  
en,

els.  
vall





Linetta Silver



Linetta Light Grey



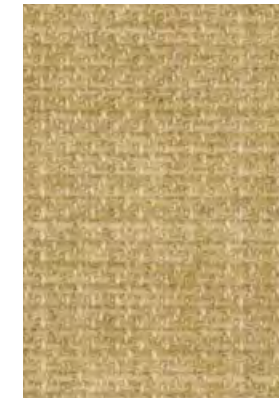
Linetta Slate



Linetta Cream



Linetta Salmon



Linetta Olive



Linetta Grape



Linetta Mint



Linetta Light Blue



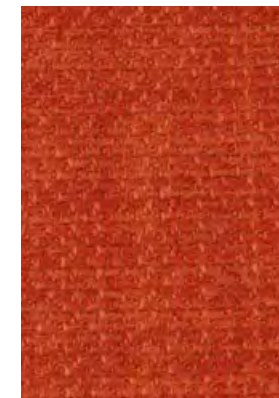
Linetta Steel



Linetta Nutmeg



Linetta Sand



Linetta Burnt Orange



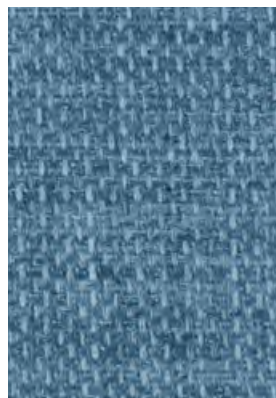
Linetta Lime



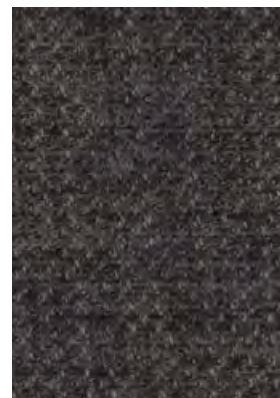
Linetta Purple



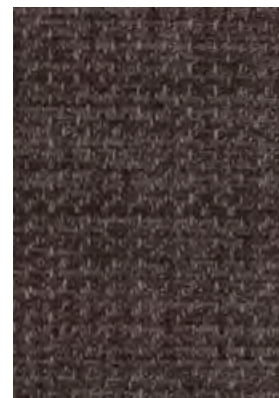
Linetta Duck Egg



Linetta Denim



Linetta Charcoal



Linetta Truffle



Linetta Gold



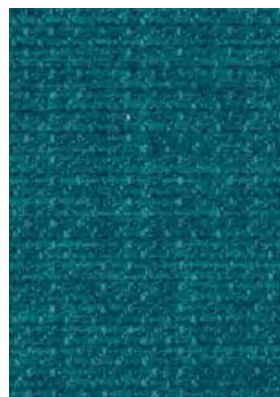
Linetta Red



Linetta Orchid



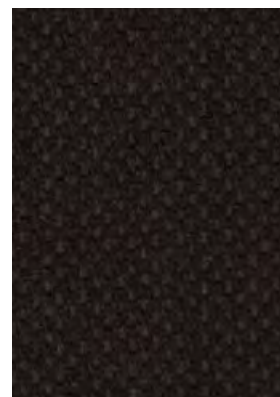
Linetta Damson



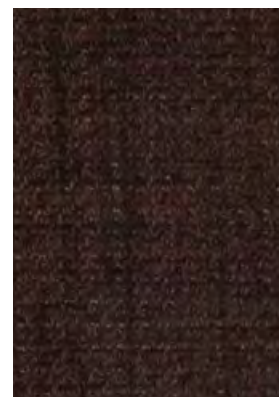
Linetta Teal



Linetta Midnight



Linetta Black



Linetta Chocolate



Linetta Mustard



Linetta Plum



Linetta Violet





Tones Pebble



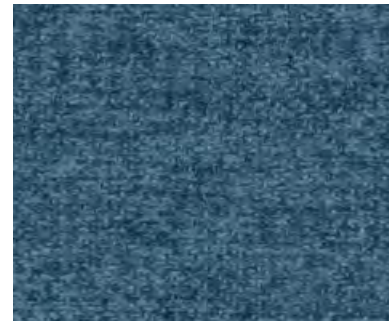
Tones Sky



Tones Silver



Tones Latte



Tones Marine



Tones Pewter



Tones Mink



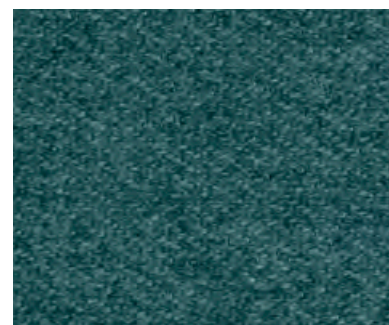
Tones Petrol



Tones Steel



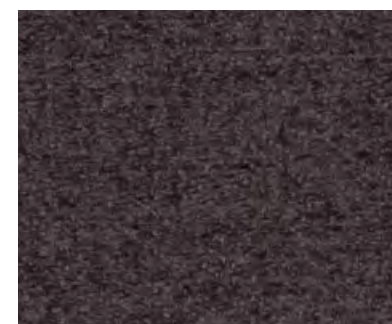
Tones Truffle



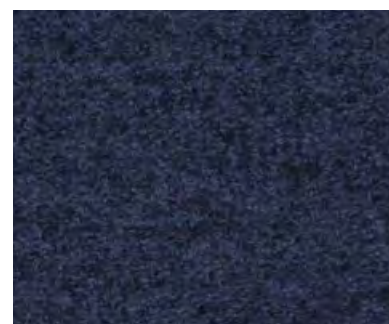
Tones Forest



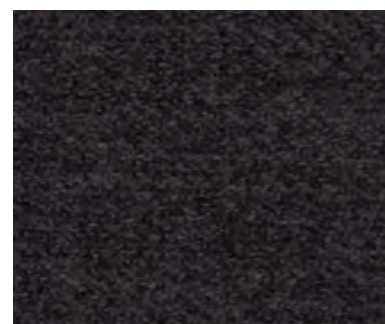
Tones Lead



Tones Raven



Tones Sapphire



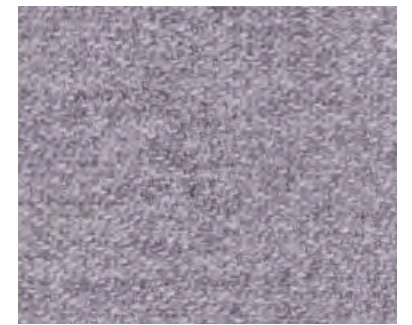
Tones Graphite



Tones Gold



Tones Old Rose



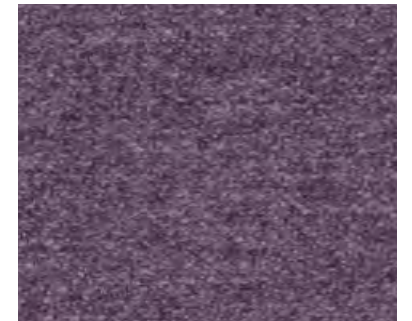
Tones Pearl



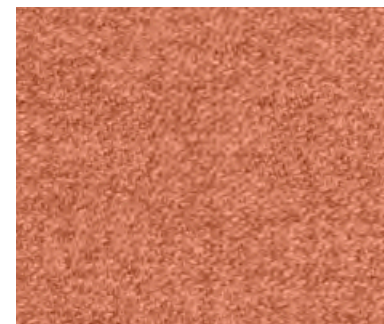
Tones Mustard



Tones Orchid



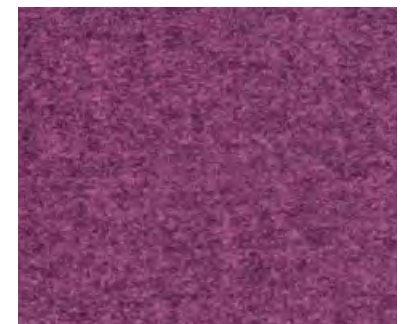
Tones Lilac



Tones Terracotta



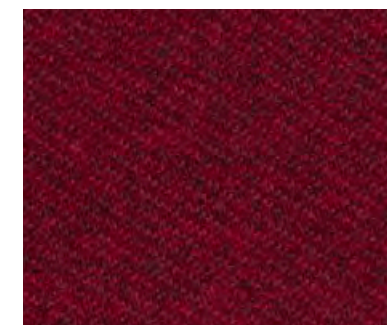
Tones Wine



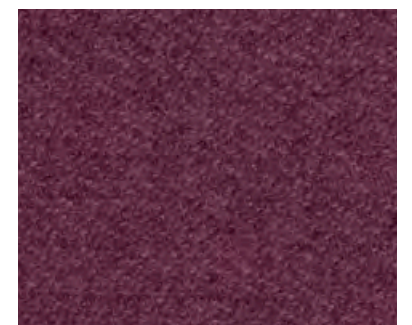
Tones Thistle



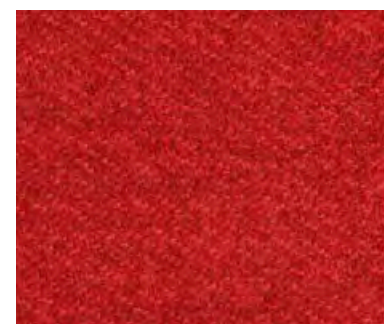
Tones Brick



Tones Claret



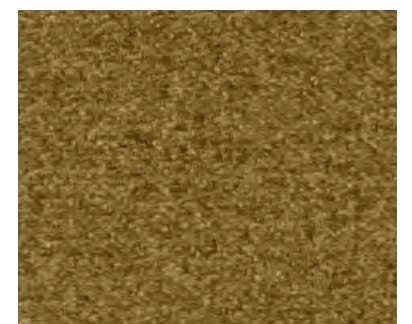
Tones Aubergine



Tones Tomato

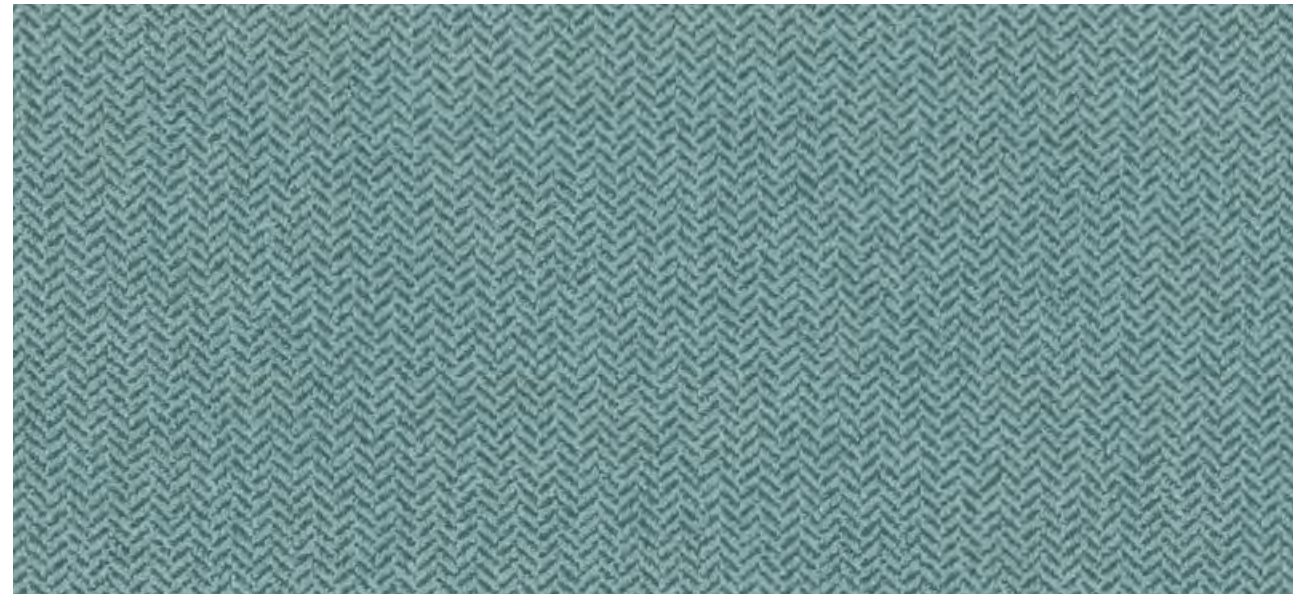


Tones Cherry

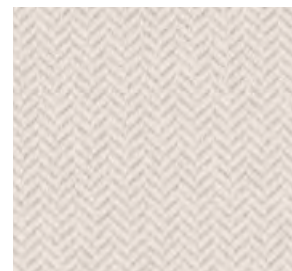


Tones Olive

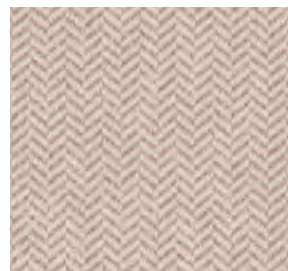




Nova Seagrass



Nova Vanilla



Nova Oatmeal



Nova Mink



Nova Dove



Nova Latte



Nova Walnut



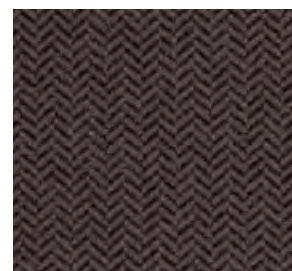
Nova Raven



Nova Taupe



Nova Chestnut



Nova Ebony



Nova Nutmeg



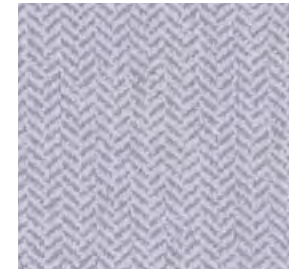
Nova Grape



Nova Dill



Nova Lemon



Nova Lavender



Nova Wedgwood



Nova Fennel



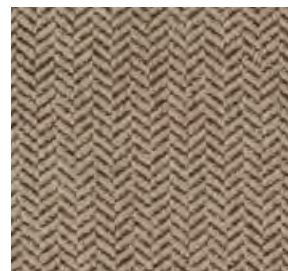
Nova Saffron



Nova Burgundy



Nova Orion



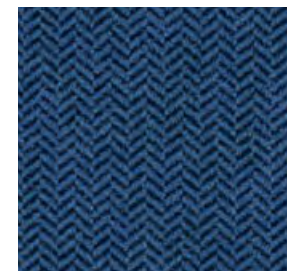
Nova Sage



Nova Burnt Orange



Nova Damson



Nova Bluebell



Nova Moss



Nova Russet



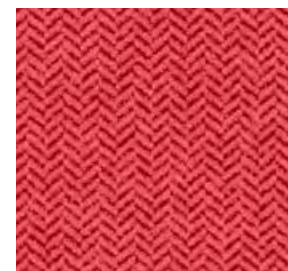
Nova Claret



Nova Royal



Nova Lime



Nova Poppy



Nova Raspberry