

# Vico Stretcher

**09770** The Vico Stretcher has been designed to give first aid quickly and efficiently in several situations. Numerous possibilities and accessories make the work of the nursing staff easier, whereas the patient's welfare is increased.

## Carriage

- Hydraulic high/low adjustment by means of support arms.
- The steel frame is finished with a removable vacuum-formed synthetic cover cap (\*).
- Trendelenburg adjustment up to  $\pm 12^\circ$  (\*).
- Reverse Trendelenburg adjustment up to  $\pm 12^\circ$  (\*).
- High-quality design castors Integral S  $\varnothing$  150 mm, central brake with directional castor.
- Double design pedal to activate the central brake mechanism.
- The 5<sup>th</sup> castor improves the maneuverability of the stretcher (\*).

## Mattress platform

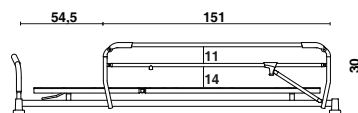
- Two-section mattress platform.
- Adjustable backrest up to  $\pm 90^\circ$  by means of a gas spring.
- Solid laminate mattress platform, thickness of 6 mm, X-ray transparent.
- The mattress platform sections are equipped with openings for patient restraint straps.
- The 4 corners are equipped with integrated bumpers.
- Pop-up push handles at the head end and at the foot end (\*).
- The locking panels are available at head and/or foot end (\*).
- The side beams are equipped with a DIN rail on both sides (\*).
- The mattress platform is standard provided with a mattress that consists of 7 cm fire retardant comfort foam. The fire retardant cover is very durable and easy to clean.

## Manipulations

- High/low adjustment by means of pedals that are within easy reach on both sides of the stretcher.
- The Trendelenburg position is activated by means of the foot pedal at the foot end of the stretcher (\*).
- The gas spring-supported backrest can be adjusted by means of a bracket.

## Sideguards Atmosphère (\*)

- Sideguards offer additional protection while moving the patient.
- The Atmosphère sideguards constitute one unit and can be lowered by means of an easy locking mechanism.



### Paneltypes

- Pop-up push handles
- Locking panel Vela (\*)

### Sideguards

- Atmosphère (\*)

### Accessories

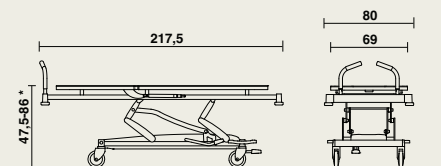
We would like to refer to our accessorylist.

(\*) Option



## Dimension

- Width: 80 cm, Length: 217,5 cm
- Height variation of the mattress platform\*:  $\pm 47,5$  cm -  $\pm 86$  cm (with castors  $\varnothing$  150 mm)
- Safe working load: 250 kg
- Weight (without accessories): 85 kg
- Mattress dimensions: 201 x 71 cm, thickness: 7 cm  
Optional mattress of 10 cm, of wich 3 cm visco elastic foam.



## Materials and finishing

- Metal: steel, epoxy coating RAL 9006 alu.
- Synthetic.
- Laminate panels.
- The hinge points are equipped with self-lubricating synthetic bearings (= maintenance-free).
- Withstand the common cleaning products.

For further information about used materials, constructions and maintenance: consult our materialfiles.

## Options

- 4-section mattress platform.
- Atmosphère sideguards
- (Reverse-) Trendelenburg.
- Foldable IV rod at head and/or foot end.
- Removable IV rod with non adjustable height.
- DIN rail.
- 2 pop-up push handles at foot end.
- Fixed oxigen bottle holder.
- Removable oxigen bottle holder.
- Paper roll holder 60 cm.
- Visco-elastic mattress 10 cm.
- Locking panel Vela at head and/or foot end.
- Double design pedal at head end.
- Integral S castors  $\varnothing$  200 mm.
- 5<sup>th</sup> castor (in combination with castors of  $\varnothing$  200 mm).
- X-ray cassette holder.
- Removable tray at head end.
- Mattress platform extension (+20 cm).

