

VICO Stretcher fixed height

09807 This stretcher is very suited for intern transportations. First diagnoses can be made very fast, thanks to the x-ray permeable mattress platform.

Carriage

- Steel frame.
- High-quality Levina castors Ø 125 mm, separate brakes.

Mattress platform

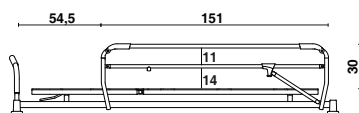
- Two-section mattress platform.
 - Adjustable backrest up to $\pm 90^\circ$ by means of a gas spring.
 - Solid laminate mattress platform, thickness of 6 mm, X-ray transparent.
 - The mattress platform sections are equipped with openings for patient restraint straps.
 - The 4 corners are equipped with integrated bumpers.
 - Pop-up push handles at the head end.
- The locking panels are available at head and/or foot end (*).
 - The side beams are equipped with an DIN rail on both sides (*).
 - The mattress platform is standard provided with a mattress that consists of 7 cm fire retardant comfort foam. The fire retardant cover is very durable and easy to clean.

Manipulations

- The gas spring-supported backrest can be adjusted by means of a bracket.

Sideguards Atmosphère (*)

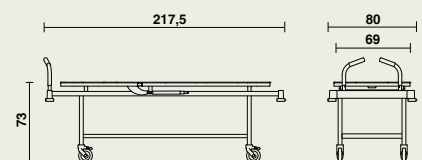
- Sideguards offer additional protection while moving the patient.
- The Atmosphère sideguards constitute one unit and can be lowered by means of an easy locking mechanism.



Dimension

- Width: 80 cm, Length: 217,5 cm
- Fixed height of the mattress platform: 73 cm
- Safe working weight: 200 kg
- Weight (without accessories): 70 kg
- Mattress dimensions: 201 x 70,5 cm, thickness: 7 cm

Optional mattress of 10 cm, of which 3 cm visco elastic foam.



Materials and finishing

- Metal: steel, epoxy coating RAL 9006 alu.
- Synthetic.
- Laminate panels.
- Self-lubricating hinges (= maintenance-free).
- Withstand the common cleaning products.

For further information about used materials, constructions and maintenance: consult our materialfiles.

Options

- Foldable IV rod at head and/or foot end.
- Removable IV rod with non adjustable height.
- DIN rail.
- 2 pop-up push handles at foot end.
- Removable oxygen bottle holder.
- Paper roll holder 60 cm.
- Visco-elastic mattress 10 cm.
- Locking panel Vela at head and/or foot end instead of pop-up push handles.
- X-ray cassette holder.
- Mattress platform extension (+20 cm).

Paneltypes

- Pop-up push handles
- Locking panel Vela (*)

Sideguards

- Atmosphère (*)

Accessories

We would like to refer to our accessory list.

(*) Option

